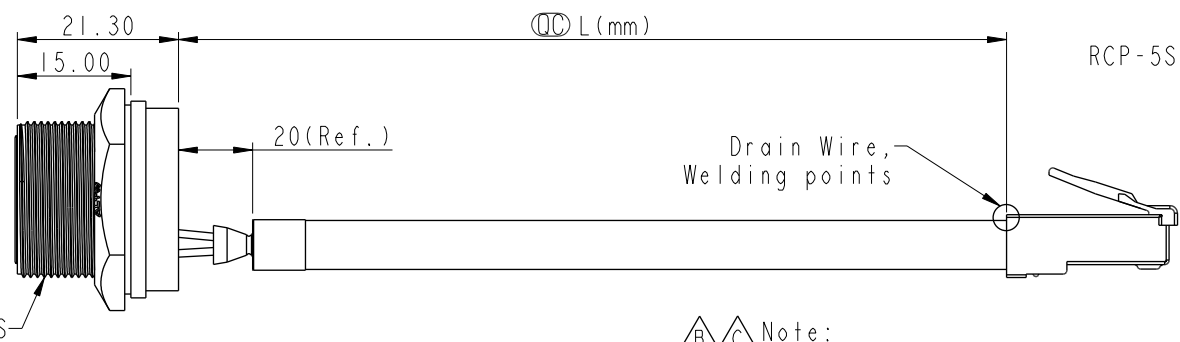
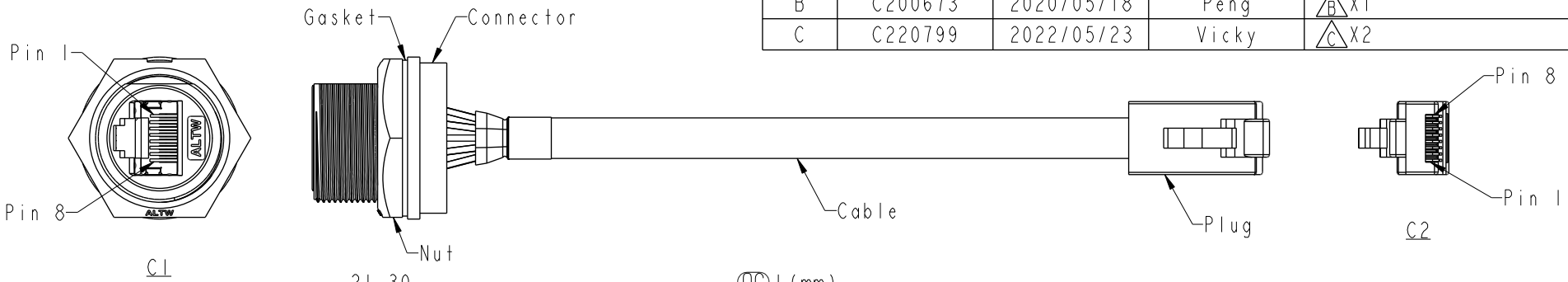


THIS DOCUMENT IS SUBJECT TO CHANGE WITHOUT NOTICE. IT IS CONFIDENTIAL AND A PROPERTY OF AMPHENOL LTW. DISCLOSURE TO THIRD PARTY HAS TO BE AUTHORIZED BY AMPHENOL LTW.

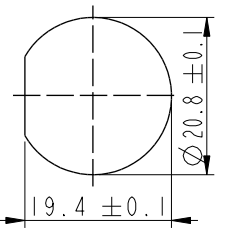
REV.	ECN NO.	DATE	SIGN	DESCRIPTION
A	Initial Release	2019/09/24	Peng	Change Rev. I To Rev.A
B	C200673	2020/05/18	Peng	$\triangle B$ X1
C	C220799	2022/05/23	Vicky	$\triangle C$ X2



RCP-5SPFFB-SCU7BXX

XX:	100~1000mm
10:	100mm
15:	150mm
20:	200mm
95:	950mm
A0:	1000mm
Cable Pitch Unit=50mm	

- $\triangle B \triangle C$ Note:
- * RoHS Compliant
 - * \odot Important dimension
 - * C1
 - Waterproof rate: IPX7, unmated
 - Housing: Thermoplastic, Black, RJ45 jack, Shielded
 - Nut: Thermoplastic, Black
 - Gasket: Rubber, Black
 - * C2
 - Waterproof rate: Non-Waterproof
 - Plug: RJ45, Shielded
 - * Use with waterproof cap or dust cap
 - Panel thickness max: 3.0mm
 - * Use without waterproof cap or dust cap
 - Panel thickness max: 4.2mm
 - * Gasket and nut are assembled on connectors
 - * Cable: Cat.5E, 24#*4P+MY+D+AL, PVC Jacket, Black, OD6.5mm
 - * Cable length tolerance:
 - 100mm < L ≤ 300mm: ±15mm
 - 300mm < L ≤ 1000mm: ±20mm



Shield	Drain Wire	接地線	Shield	
8	Brown	棕	8	Twist
7	White/Brown	白/棕	7	
6	Green	綠	6	Twist
5	White/Blue	白/藍	5	
4	Blue	藍	4	Twist
3	White/Green	白/綠	3	
2	Orange	橘	2	Twist
1	White/Orange	白/橘	1	
C1	Wire Color		C2	
Recommended Panel Cut-Out		Pin Out		

UNIT:mm	\odot	TITLE	RJ, C PLASTIC, C5E SHLD FRONT FASTENED, F, PNL SHORT, SCREW	
TOLERANCE	±0.5mm	SCALE	1:2	SIZE A4
		REV.	C	WC-REV. A.1
			\odot : Inspection item	

Amphenol LTW		ITEM NO	RCP-5SPFFB-SCU7BXX	DRAWN BY	Peng	DATE	2019-09-24
安費諾亮泰企業股份有限公司		DWG NO	RCP-5SPFFB-SCU7BXX	CHECKED BY	Feng-Li	DATE	2019-09-24
		CUSTOMER	ALTW	APPROVED BY	Jerry	DATE	2019-09-24