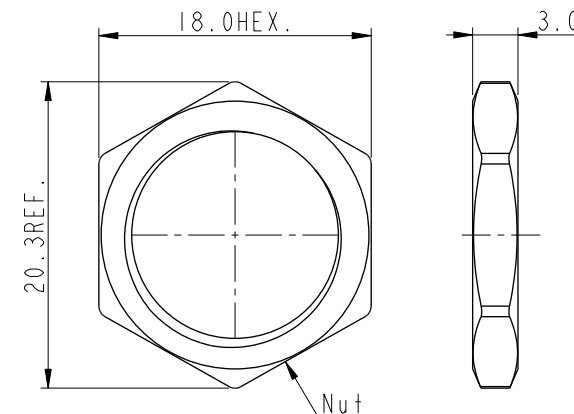


| REV. | ECN NO. | DATE       | SIGN   | DESCRIPTION  |
|------|---------|------------|--------|--|
| A    |         | 2022-08-05 | Sam Ho | Rev.01 to A, Initial Released                                      |
| B    | C230086 | 2023-01-31 | Ruru   | <span style="border: 1px solid black; padding: 0 2px;">B</span> XI |



Note:  
\* RoHS Compliant  
\* QC Important dimension  
B\* Waterproof rate: IP68, unmated 1m/24h  
\* Housing: Thermoplastic, Black  
\* Pin: Copper Alloy, Gold plated  
\* Shield Pin: Copper Alloy, Tin plated  
\* Shield: Metal  
\* Nut: Metal  
\* O-Ring: Rubber, Black  
\* For panel thickness max: 4.5mm  
\* Recommend PCB thickness max: 2.0mm  
\* Nut is packed separately in pe bag  
ASD-XXPMMP-QC8001  
XX: No. Of Pin

|           |         |  |
|-----------|---------|--|
| UNIT:mm   |         | TITLE  |
| TOLERANCE |         | XLOK, A SHLD-5A, FRONT FASTENED<br>M, M, PCB S, PUSH LOCK  |
| ±0.50mm   |         |  |
| SCALE     | SIZE    | SHEET  |
| 2:1       | A4      | 1 OF 1   |
| REV.      | WC-REV. | <span style="border: 1px solid black; border-radius: 50%; padding: 0 2px;">QC</span> : Inspection item |
| B         |         |  |

|                   |             |            |
|-------------------|-------------|------------|
| ITEM NO           | DRAWN BY    | DATE       |
|                   | Sam Ho      | 2022-08-05 |
| DWG NO            | CHECKED BY  | DATE       |
| ASD-XXPMMP-QC8001 | Fred Lee    | 2022-08-05 |
| CUSTOMER          | APPROVED BY | DATE       |
| ALTW              | Fred Lee    | 2022-08-05 |

THIS DOCUMENT IS SUBJECT TO CHANGE WITHOUT NOTICE. IT IS CONFIDENTIAL AND A PROPERTY OF Amphenol LTW. DISCLOSURE TO THIRD PARTY HAS TO BE AUTHORIZED BY Amphenol LTW.