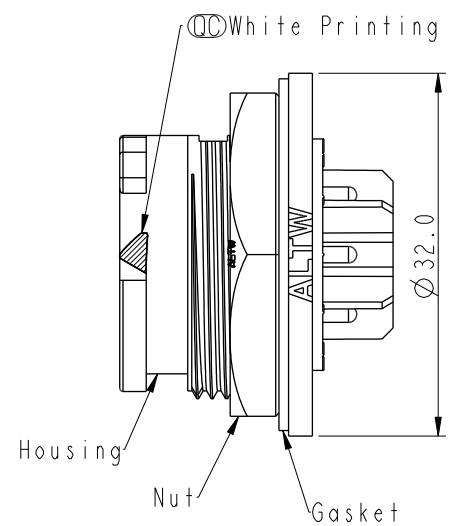
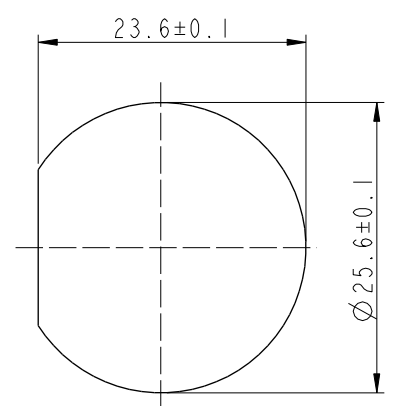
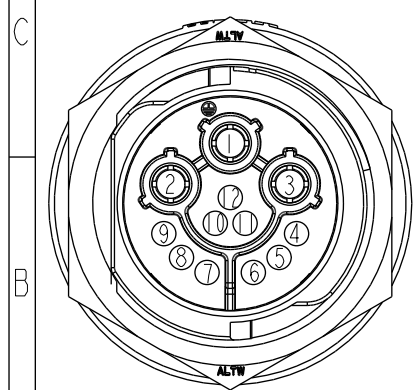
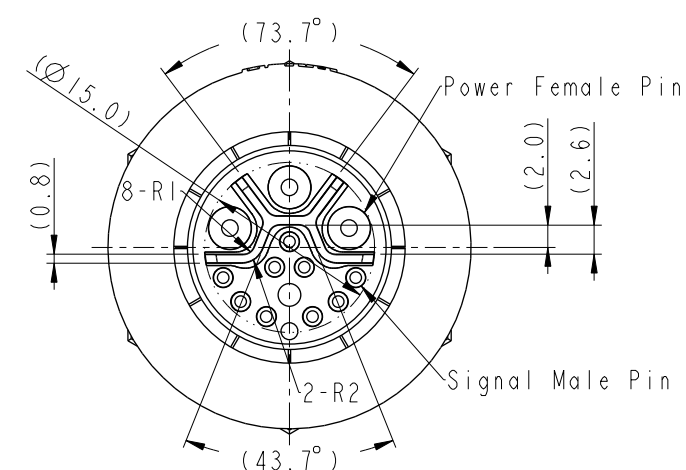
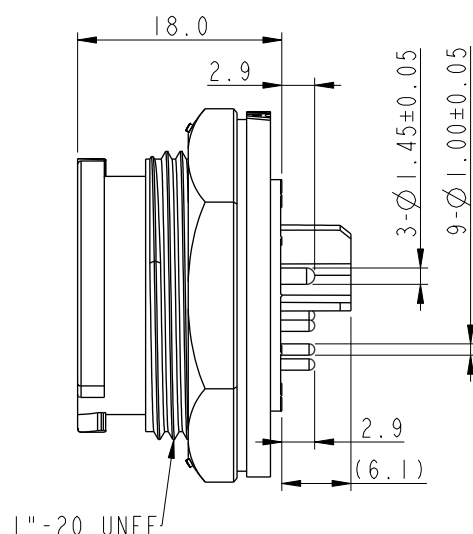
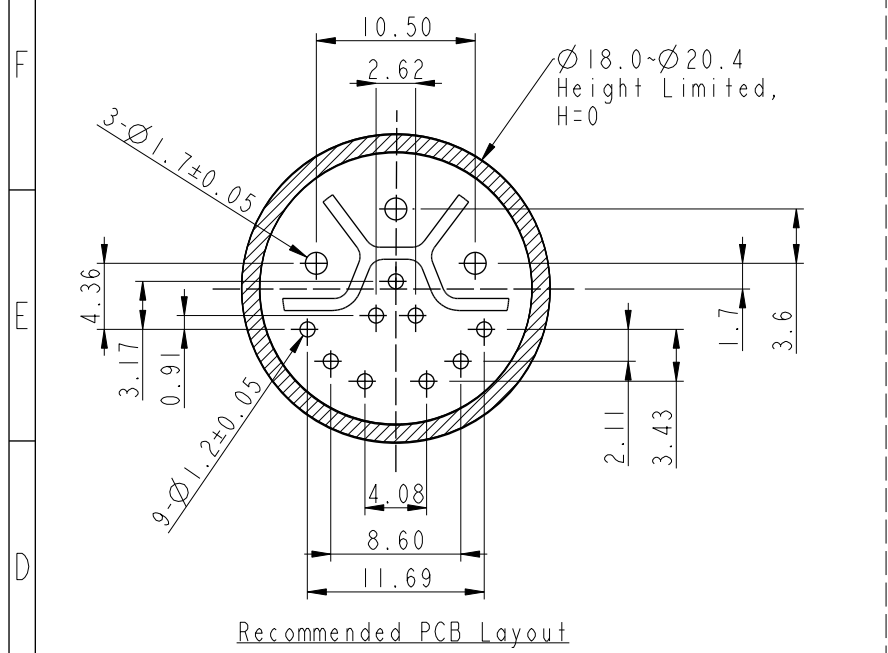


THIS DOCUMENT IS SUBJECT TO CHANGE WITHOUT NOTICE. IT IS CONFIDENTIAL AND A PROPERTY OF Amphenol LTW. DISCLOSURE TO THIRD PARTY HAS TO BE AUTHORIZED BY Amphenol LTW.

REV.	ECN NO.	DATE	SIGN	DESCRIPTION
A		2022/02/09	Na Liu	New Item
B	C220278	2022/02/23	Na Liu	$\triangle B$ X2
C	C230175	2023/02/13	Vicky	$\triangle C$ X2



$\triangle B$ DCD-XXPMDP-QC8001
XX: No. Of Pin

- Note:
- * \odot Important Dimension To Check.
 - * Waterproof Rate: IP68(1M/24Hours).
 - * Connector
 - Housing: Thermoplastic, Black.
 - Signal Male Pin: Copper Alloy, Gold Plated.
 - Power Female Pin: Copper Alloy, Nickel Plated.
 - * Nut: Thermoplastic, Black.
 - * Gasket: Rubber, Gray.
 - * Use without waterproof cap
Panel Thickness Max: 3.6mm
 - * Use with waterproof cap
Panel Thickness Max: 2.6mm
 - * The recommended PCB thickness is 1.6-2.0mm
 - * Gasket & Nut are packed separately in PE bags

UNIT:mm		TITLE	XLOK, D-20A+5A, FRONT FASTENED $\triangle C$ M, F PWR+M SIG(H), PCB S, PUSH LOCK		
TOLERANCE		SCALE	3:2	SIZE	A4
.X ±0.25		REV.	C	WC-REV.	A.1
.XX ±0.1					
.XXX ±0.05					
ANGLES ±1°					
					\odot : Inspection item

Amphenol LTW
安費諾亮泰企業股份有限公司

ITEM NO	DWG NO	CUSTOMER	DRAWN BY	CHECKED BY	APPROVED BY	DATE
	DCD-XXPMDP-QC8001 $\triangle B$	ALTW	Na Liu	Fisher Wang	Max Yang	2022-02-09
						2022-02-09
						2022-02-09