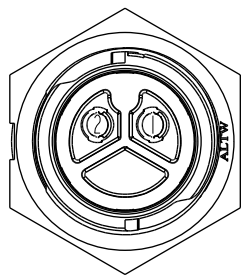
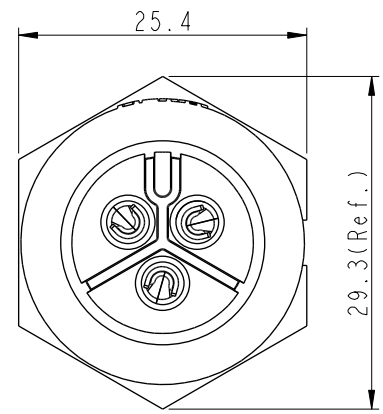
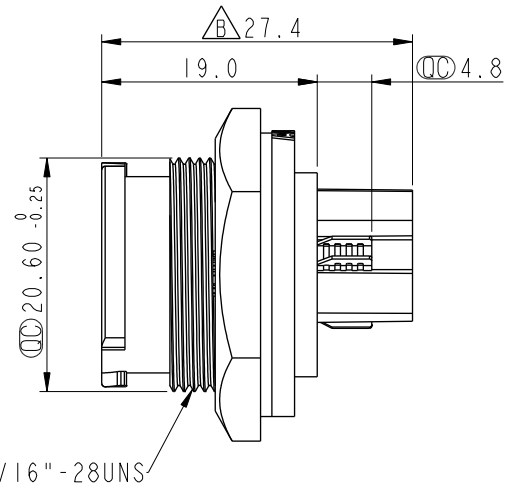
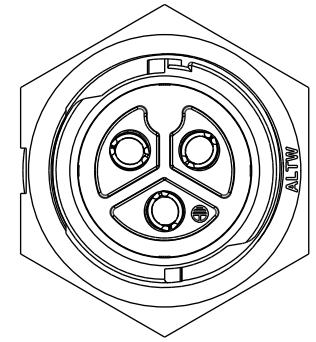


THIS DOCUMENT IS SUBJECT TO CHANGE WITHOUT NOTICE. IT IS CONFIDENTIAL AND A PROPERTY OF AMPHENOL LTW. DISCLOSURE TO THIRD PARTY HAS TO BE AUTHORIZED BY AMPHENOL LTW.

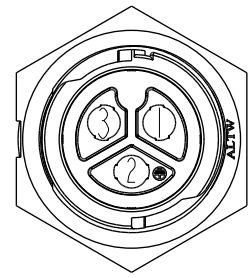
REV.	ECN NO.	DATE	SIGN	DESCRIPTION
C	C220254	2022/02/21	Xiaofeng	$\triangle C$ XI
D	C230087	2023/01/31	Vicky	$\triangle D$ X2
E	C230673	2023/05/23	Vicky	$\triangle E$ XI

$\triangle B$ CC-XXPMFS-QC801P

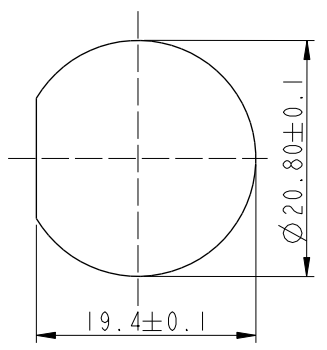
XX: No. Of Pin



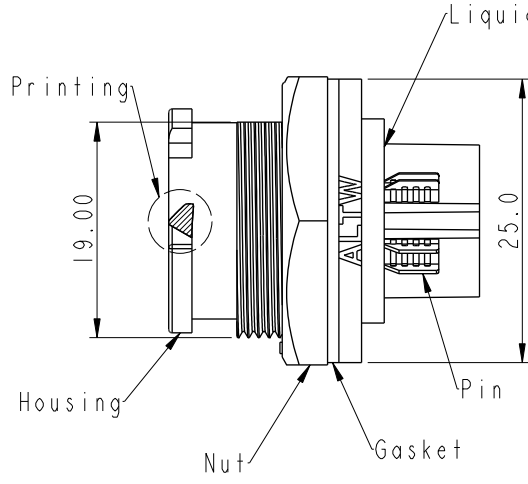
$\triangle B$
2Pin
Pin Assignments
Front View



$\triangle B$
3Pin
Pin Assignments
Front View



Recommended Panel Cut-Out



Note:

- * \textcircled{C} Important Dimension.
- $\triangle D$ * Waterproof Rate: IP68, Unmated 1M/24h.
- * Connector
- Housing: Thermoplastic, Black.
- $\triangle C$ Pin: Copper Alloy, Silver Plated.
- Gasket: Rubber, Gray.
- Nut: Thermoplastic-Black.
- * Use with waterproof cap or dust cap
Panel Thickness Max: 2.5mm.
- * Use without waterproof cap or dust cap
Panel Thickness Max: 3.7mm.
- $\triangle B$ * Gasket and nut are packed separately in PE bag.
- * RoHS Compliant.

UNIT:mm		TITLE	XLOK, C-20A, FRONT FASTENED $\triangle B \triangle D \triangle E$	
TOLERANCE		SCALE	SIZE	SHEET
.X ±0.25		3:2	A4	1 OF 1
.XX ±0.1		REV.	WC-REV.	
.XXX ±0.05		E	.0	\textcircled{C} : Inspection item
ANGLES ±1°				

Amphenol LTW
安費諾亮泰企業股份有限公司

ITEM NO	DRAWN BY	DATE
	Xiaofeng	2021/08/25
DWG NO	CHECKED BY	DATE
CC-XXPMFS-QC801P	Li-Feng	2021/08/25
CUSTOMER	APPROVED BY	DATE
ALTW	Jerry	2021/08/25