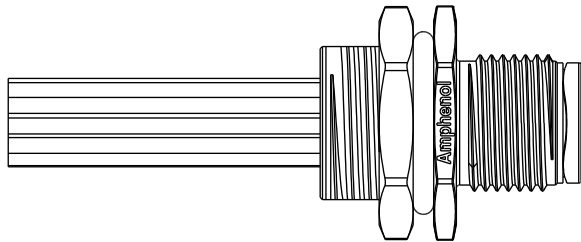
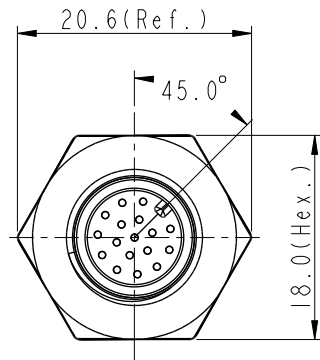
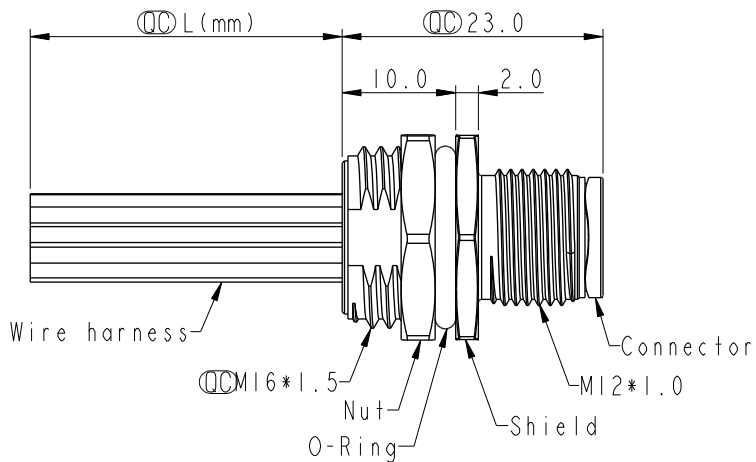
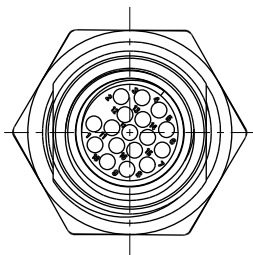
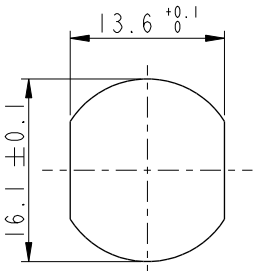


REV.	ECN NO.	DATE	SIGN	DESCRIPTION
H	C210239	2021/04/13	Ruru	X2
I	C221878	2022/12/19	Ruru	X1
J	C231031	2023/08/04	Ruru	X1



- Note:
- * RoHS Compliant
 - * Important dimension
 - * Waterproof rate: IP68, unmated 1m/24h
 IP69K, mated
 - * Connector
 Housing: Thermoplastic, Black
 Pin: Copper alloy, Gold plated
 - * Shield: Metal
 - * Nut: Metal
 - * O-Ring: Rubber, Black
 - * Wire harness: UL1061
 - * For panel thickness max: 4.5mm
 - * O-Ring and nut are assembled on connectors
 - * Wire harness tolerance: 100mm: ±10mm
 100mm < L ≤ 300mm: ±15mm
 300mm < L ≤ 1000mm: ±20mm
 1000mm < L ≤ 1500mm: ±50mm



Recommended
Panel Cut-Out

UNIT:mm	
TOLERANCE	
.X	±0.25
.XX	±0.1
.XXX	±0.05
ANGLES	±1°

TITLE N SEN, M12 A, SCREW RECEPTACLE, M, M, FI/PANEL CRIMP			
SCALE 1:1	SIZE A4	SHEET 1 OF 2	
REV. J	WC-REV. A.5	Inspection item	

Amphenol LTW
安費諾亮泰企業股份有限公司

ITEM NO	DRAWN BY Ruru	DATE 2019-09-19
DWG. NO M12A-XXPMC-SH8CX	CHECKED BY Rita	DATE 2019-09-19
CUSTOMER ALTW	APPROVED BY Max	DATE 2019-09-19

THIS DOCUMENT IS SUBJECT TO CHANGE WITHOUT NOTICE. IT IS CONFIDENTIAL AND A PROPERTY OF Amphenol LTW. DISCLOSURE TO THIRD PARTY HAS TO BE AUTHORIZED BY Amphenol LTW.

	1	2	3	4	5	6	7	8		
F							<div><div><div>E</div></div></div>	17P	26	MI2A-17PMMC-SH8CXX
								5P	22	MI2A-05PMMC-SH8CXX
								4P		MI2A-04PMMC-SH8CXX
								3P		MI2A-03PMMC-SH8CXX
								Contacts	AWG	Item No.
E										
D										
C	5	--		5	--		5	Gray	灰	
	4	Black	黑	4	Black	黑	4	Black	黑	
	3	Blue	藍	3	Blue	藍	3	Blue	藍	
	2	--		2	White	白	2	White	白	
	1	Brown	棕	1	Brown	棕	1	Brown	棕	
	Pin #	Wire		Pin #	Wire		Pin #	Wire		
B	Pin Out									
	3P		4P		5P		17P			
	Pin Assignments Front View									
A	UNIT:mm				TITLE		N SEN, MI2 A, SCREW			
					RECEPTACLE, M, M, FI/PANEL CRIMP					
	TOLERANCE				SCALE		SIZE			
	.X ±0.25				1:1		A4			
.XX ±0.1				REV.		WC-REV.				
.XXX ±0.05				J		A.5				
ANGLES ±1°						QC: Inspection item				
<div><div><div><div><div></div><div></div><div></div></div><div>MI2A-XXPMMC-SH8CXX</div></div></div><div>XX: No. Of Pin</div><div><div>10:100mm</div><div>15:150mm</div><div>20:200mm</div><div>95:950mm</div><div>Cable Pitch Unit=50mm</div><div>A0:1000mm</div><div>A5:1500mm</div><div>Cable Pitch Unit=100mm</div><div>Wire Length (L):150~1500 mm</div></div></div>										
<div><div><div><div><div></div><div></div><div></div></div><div>MI2A-XXPMMC-SH8CXX</div></div></div><div>Amphenol LTW</div><div>安費諾亮泰企業股份有限公司</div></div>										
				ITEM NO		DRAWN BY		DATE		
						Ruru		2019-09-19		
				DWG NO		CHECKED BY		DATE		
				MI2A-XXPMMC-SH8CXX		Rita		2019-09-19		
				CUSTOMER		APPROVED BY		DATE		
				ALTW		Max		2019-09-19		
8 W10814-03-2001A2										

THIS DOCUMENT IS SUBJECT TO CHANGE WITHOUT NOTICE. IT IS CONFIDENTIAL AND A PROPERTY OF Amphenol LTW. DISCLOSURE TO THIRD PARTY HAS TO BE AUTHORIZED BY Amphenol LTW.