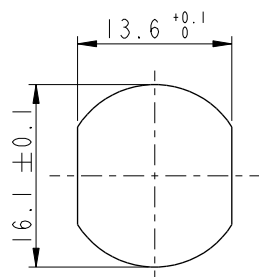
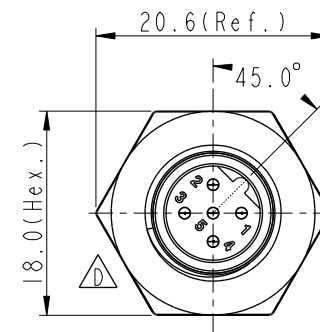
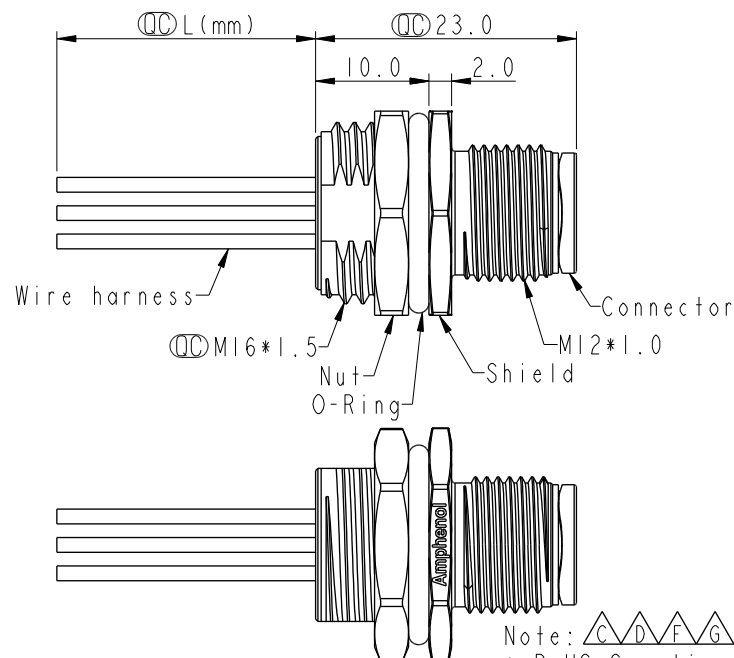
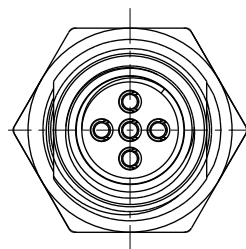


REV.	ECN NO.	DATE	SIGN	DESCRIPTION
G	C210593	2021/04/16	Ruru	X3
H	C221879	2022/12/20	Ruru	X1
I	C231031	2023/08/04	Ruru	X1

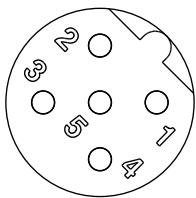


Recommended
Panel Cut-Out



5	Gray	灰
4	Black	黑
3	Blue	藍
2	White	白
1	Brown	棕

Pin # Wire
Pin Out



Pin Assignments
Front View

M12B-XXPMMC-SH8CXX

XX: No. Of Pin

10:100mm
15:150mm
20:200mm
95:950mm
Cable Pitch Unit=50mm
A0:1000mm
A5:1500mm
Cable Pitch Unit=100mm
Wire Length (L):150~1500 mm

Note:

* RoHS Compliant

* Important dimension

* Waterproof rate: IP68, unmated 1m/24h
 IP69K, mated

* Connector

Housing: Thermoplastic, Black
Pin: Copper alloy, Gold plated

* Shield: Metal

* Nut: Metal

* O-Ring: Rubber, Black

* Wire harness: UL1061, 22AWG

* For panel thickness max: 4.5mm

* O-Ring and nut are assembled on connectors

* Wire harness tolerance: 100mm: ±10mm

100mm < L ≤ 300mm: ±15mm

300mm < L ≤ 1000mm: ±20mm

1000mm < L ≤ 1500mm: ±50mm

UNIT:mm		
TOLERANCE		
.X	±0.25	
.XX	±0.1	
.XXX	±0.05	
ANGLES	±1°	

TITLE N SEN, M12 B, SCREW RECEPTACLE, M, M, FI/PANEL CRIMP			
SCALE 2:1	SIZE A4	SHEET 1	OF 1
REV. 1	WC-REV. A.5	Inspection item	

Amphenol LTW
安費諾亮泰企業股份有限公司

ITEM NO	DRAWN BY Ruru	DATE 2019-09-19
DWG NO M12B-XXPMMC-SH8CXX	CHECKED BY Rita	DATE 2019-09-19
CUSTOMER ALTW	APPROVED BY Max	DATE 2019-09-19