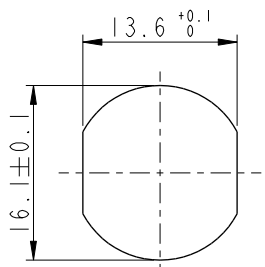
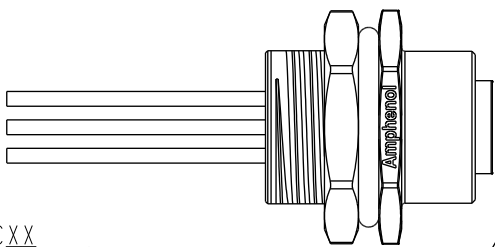
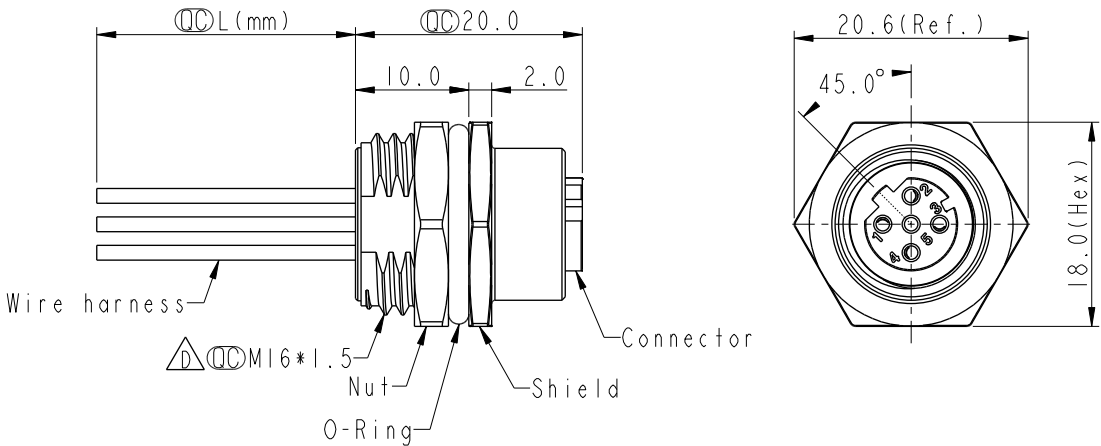
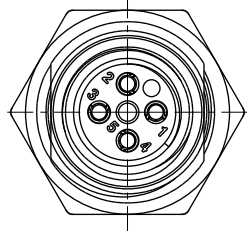


THIS DOCUMENT IS SUBJECT TO CHANGE WITHOUT NOTICE. IT IS CONFIDENTIAL AND A PROPERTY OF Amphenol LTW. DISCLOSURE TO THIRD PARTY HAS TO BE AUTHORIZED BY Amphenol LTW.

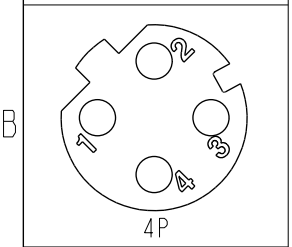
REV.	ECN NO.	DATE	SIGN	DESCRIPTION
F	C221879	2022/12/20	Ruru	X1
G	C231032	2023/08/07	Ruru	X1
H	C240699	2024/06/20	Vicky	X2



Recommended Panel Cut-Out



4	Black	黑
3	Blue	藍
2	White	白
1	Brown	棕



Pin Assignments Front View

MI2D-XXPFFC-SH8CXX

XX: No. Of Pin

- 15: 150mm
- 20: 200mm
- 95: 950mm
- Cable Pitch Unit: 50mm
- A0: 1000mm
- A5: 1500mm
- Cable Pitch Unit: 100mm
- Wire Length(L): 150~1500mm

- Note: $\triangle C \triangle D \triangle E$
- * RoHS Compliant
 - * CC Important dimension
 - * Waterproof rate: IP68, unmated 1m/24h
 - * $\triangle G$ IP69K, mated
 - * Connector
 - * Housing: Thermoplastic, Black
 - * Pin: Copper alloy, Gold plated
 - * O-Ring: Rubber, Green
 - * Shield: Metal
 - * Nut: Metal
 - * O-Ring: Rubber, Black
 - * Wire harness: UL1061, 22AWG
 - * For panel thickness max: 4.5mm
 - * O-Ring and nut are assembled on connectors
 - * Wire harness tolerance: 150mm < L ≤ 300mm: ±15mm
 - 300mm < L ≤ 1000mm: ±20mm
 - 1000mm < L ≤ 1500mm: +50/-0mm

UNIT:mm		TITLE N SEN, M12 D, SCREW RECEPTACLE, F, F, FI/PANEL CRIMP $\triangle E$			ITEM NO		DRAWN BY		DATE	
TOLERANCE		SCALE 2:1 SIZE A4 SHEET 1 OF 1			DWC NO $\triangle D$ MI2D-XXPFFC-SH8CXX CUSTOMER		Vicky		2024-06-20	
.X ±0.25							CHECKED BY Rita		DATE 2024-06-20	
.XX ±0.1		REV. H WC-REV. A.5 CC : Inspection item		APPROVED BY Fred		DATE 2024-06-20				
.XXX ±0.05				ALTW						
ANGLES ±1°										

Amphenol LTW
安費諾亮泰企業股份有限公司