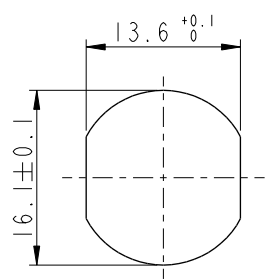


THIS DOCUMENT IS SUBJECT TO CHANGE WITHOUT NOTICE. IT IS CONFIDENTIAL AND A PROPERTY OF Amphenol LTW. DISCLOSURE TO THIRD PARTY HAS TO BE AUTHORIZED BY Amphenol LTW.

REV.	ECN NO.	DATE	SIGN	DESCRIPTION
E	C210309	2021/02/26	Ruru	X2
F	C221973	2022/12/22	Ruru	X1
G	C231034	2023/08/09	Ruru	X1

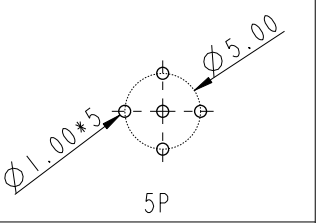
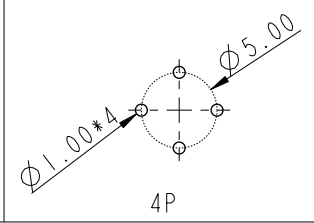
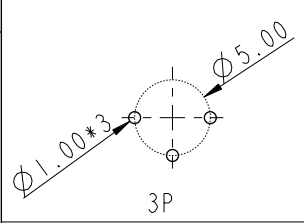
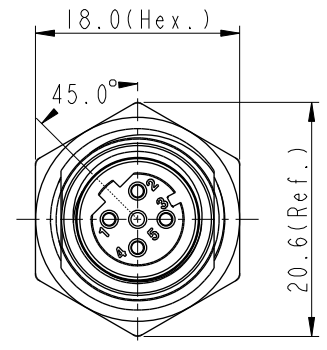
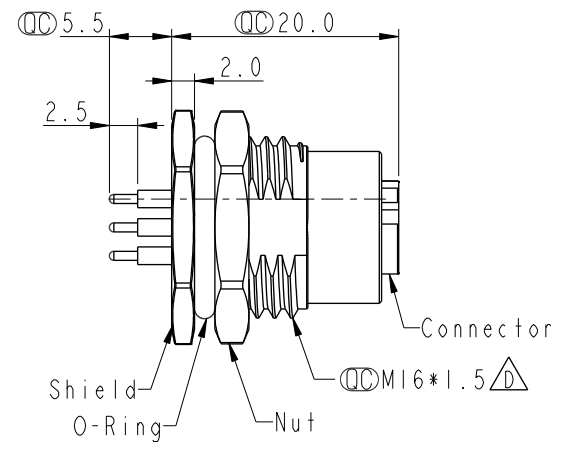
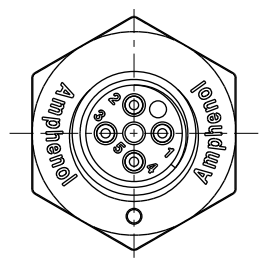


Recommended Panel Cut-Out

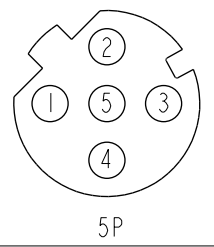
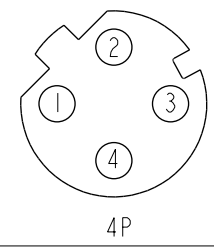
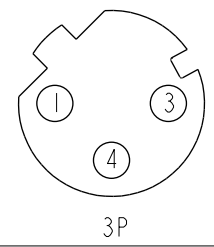


M12D-XXPFFP-SF8002

XX: No. Of Pin



PCB Layout

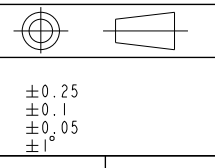


Pin Assignment Front View

- Note:
- \* RoHS Compliant
  - \* Important dimension
  - \* \* Waterproof rate: IP68, unmated 1m/24h
  - \* IP69K, mated
  - \* Connector
    - Housing: Thermoplastic, Black
    - Pin: Copper alloy, Gold plated
    - O-Ring: Rubber, Green
  - \* Shield: Metal
  - \* Nut: Metal
  - \* O-Ring: Rubber, Black
  - \* For panel thickness max: 4.5mm
  - \* Nut is packed separately in pe bag

UNIT: mm

TOLERANCE	
.X	±0.25
.XX	±0.1
.XXX	±0.05
ANGLES	±1°



TITLE N SEN, M12 D, SCREW RECEPTACLE, F, F, PCB S			
SCALE 3:2	SIZE A4	SHEET 1 OF 1	
REV. G	WC-REV. A.5	: Inspection item	

**Amphenol LTW**  
安費諾亮泰企業股份有限公司

ITEM NO.	DRAWN BY Yulong_wang	DATE 2016-08-24
DWG NO. M12D-XXPFFP-SF8002	CHECKED BY Cary	DATE 2016-08-24
CUSTOMER ALTW	APPROVED BY Jerry	DATE 2016-08-24