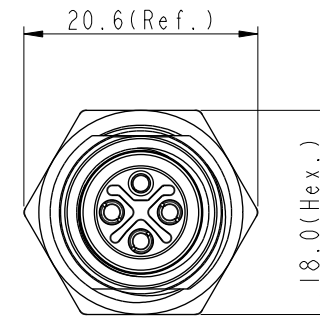
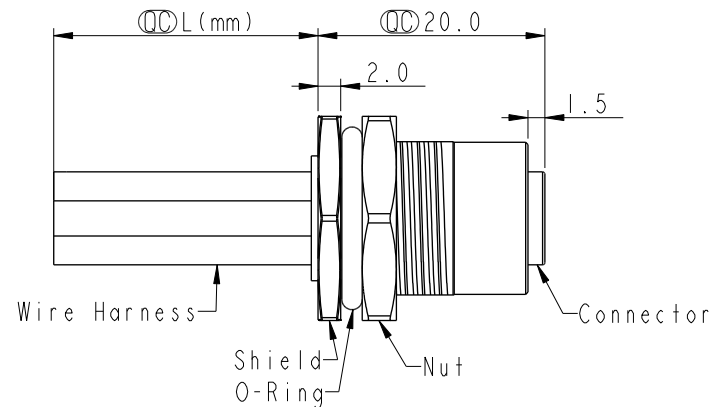
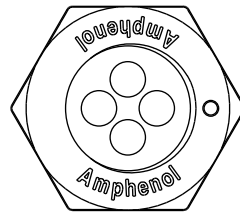
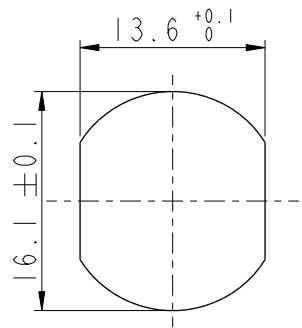
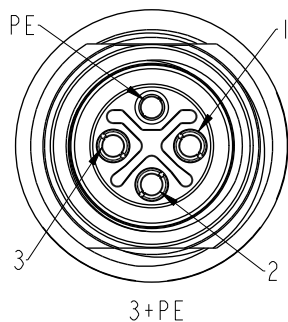


REV.	ECN NO.	DATE	SIGN	DESCRIPTION
D	C210593	2021/04/16	Ruru	 X2
E	C221879	2022/12/20	Ruru	 X1
F	C231032	2023/08/07	Rruu	 X1



PE	Black	黑
3	Blue	藍
2	White	白
1	Brown	棕

Pin #	Wire
	Pin Out

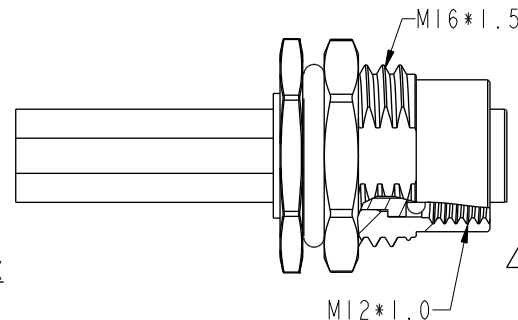



Three triangles are shown, labeled B, C, and D, arranged horizontally. Triangle B is on the left, triangle C is in the middle, and triangle D is on the right. They are all identical in shape and size.




XX: No. Of Pin

10: 100mm
15: 150mm
20: 200mm
}
95: 950mm
Cable Pitch Unit: 50mm

A0: 1000mm
}
A5: 1500mm
Cable Pitch Unit: 100mm
Wire Length(L): 150~1500mm



Note: 

- * RoHS Compliant
- *  Important dimension
- *  Waterproof rate: IP68, unmated 1m/24h
- *  IP69K, mated
- * Connector
 - Housing: Thermoplastic, Black
 - Pin: Copper alloy, Gold plated
 - O-Ring: Rubber, Green
- * Shield: Metal
- * Nut: Metal
- * O-Ring: Rubber, Black
- * Wire harness: UL1015, 16AWG
- * For panel thickness max: 4.5mm
- * O-Ring and nut are assembled on connectors
- * Wire harness tolerance: 100mm: $\pm 10\text{mm}$
 - 100mm < L \leq 300mm: $\pm 15\text{mm}$
 - 300mm < L \leq 1000mm: $\pm 20\text{mm}$
 - 1000mm < L \leq 1500mm: $\pm 50\text{mm}$

UNIT:mm				TITLE N SEN, M12 S, SCREW RECEPTACLE, F, F, SOLDER 			Amphenol LTW 安費諾亮泰企業股份有限公司		ITEM NO		DRAWN BY Vicky		DATE 2015-09-09	
TOLERANCE .X ±0.25 .XX ±0.1 .XXX ±0.05 ANGLES ±1°		SCALE 2:1		SIZE A4		SHEET 1 OF 1			DWG NO  M12S-XXPFFS-SF8CXX		CHECKED BY Rita		DATE 2015-09-09	
		REV. F		WC-REV. A.1		(QC): Inspection item		CUSTOMER ALTW		APPROVED BY Max		DATE 2015-09-09		

Amphenol LTW
安費諾亮泰企業股份有限公司