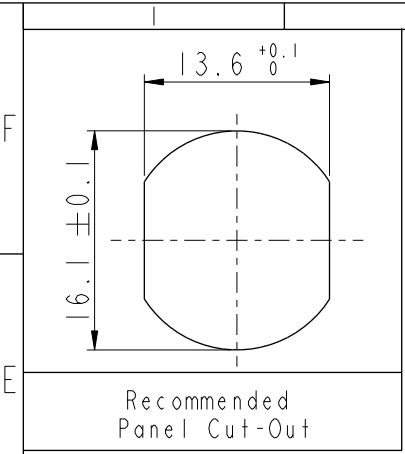
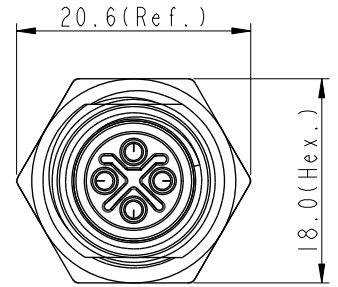
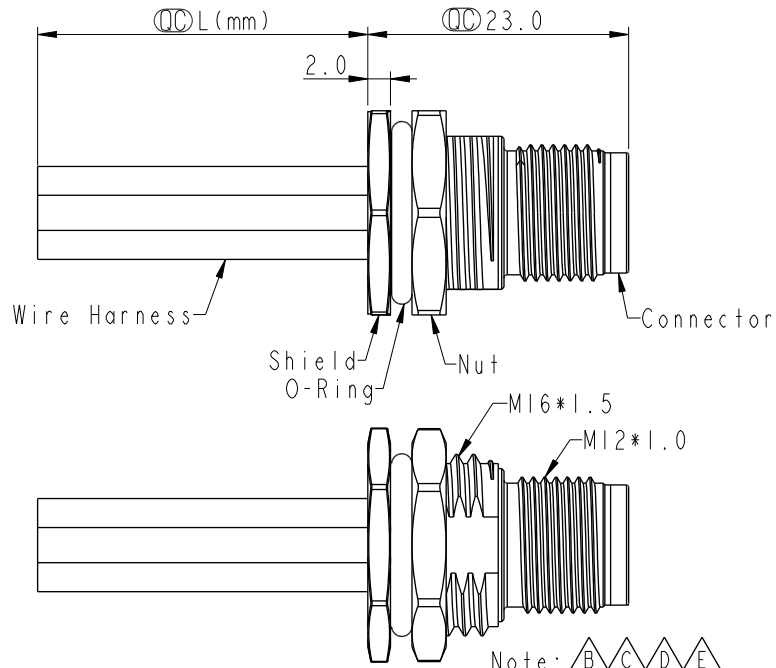
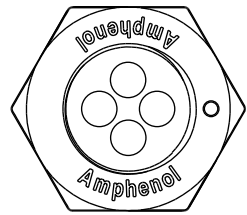


THIS DOCUMENT IS SUBJECT TO CHANGE WITHOUT NOTICE. IT IS CONFIDENTIAL AND A PROPERTY OF Amphenol LTW. DISCLOSURE TO THIRD PARTY HAS TO BE AUTHORIZED BY Amphenol LTW.

REV.	ECN NO.	DATE	SIGN	DESCRIPTION
F	C221879	2022/12/20	Ruru	△F XI
G	C231032	2023/08/07	Ruru	△G XI
H	C240701	2024/06/20	Ruru	△H X2

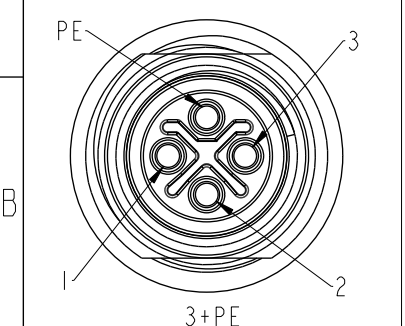


Recommended Panel Cut-Out



PE	Black	黑
3	Blue	藍
2	White	白
1	Brown	棕

Pin #	Wire	Pin Out
-------	------	---------



Pin Assignments Front View

△C △D △E
M12S-XXPMMS-SF8CXX
XX: No. Of Pin

△H
15:150mm
20:200mm
┆
95:950mm
Cable Pitch Unit:50mm

A0:1000mm
┆
A5:1500mm
Cable Pitch Unit:100mm
Wire Length(L):150~1500mm

- Note: △B △C △D △E
- * RoHS Compliant
 - * ∅ Important dimension
 - △F * Waterproof rate: IP68, unmated 1m/24h
△G IP69K, mated
 - * Connector
Housing: Thermoplastic, Black
Pin: Copper alloy, Gold plated
 - * Shield: Metal
 - * Nut: Metal
 - * O-Ring: Rubber, Black
 - * Wire harness: UL1015, 16AWG
 - * For panel thickness max: 4.5mm
 - * O-Ring and nut are assembled on connectors
 - △H * Wire harness tolerance: 150mm < L ≤ 300mm: ±15mm
300mm < L ≤ 1000mm: ±20mm
1000mm < L ≤ 1500mm: +50/-0mm

UNIT:mm	
TOLERANCE	
.X	±0.25
.XX	±0.1
.XXX	±0.05
ANGLES	±1°

TITLE N SEN, M12 S, SCREW RECEPTACLE, M, M, SOLDER △D			
SCALE 1:1	SIZE A4	SHEET 1	OF 1
REV. H	WC-REV. A.2	∅ Inspection item	

Amphenol LTW
安費諾亮泰企業股份有限公司

ITEM NO	DRAWN BY	DATE
	Ruru	2024-06-20
DWG NO △M12S-XXPMMS-SF8CXX	CHECKED BY	DATE
	Rita	2024-06-20
CUSTOMER ALTW	APPROVED BY	DATE
	Fred	2024-06-20