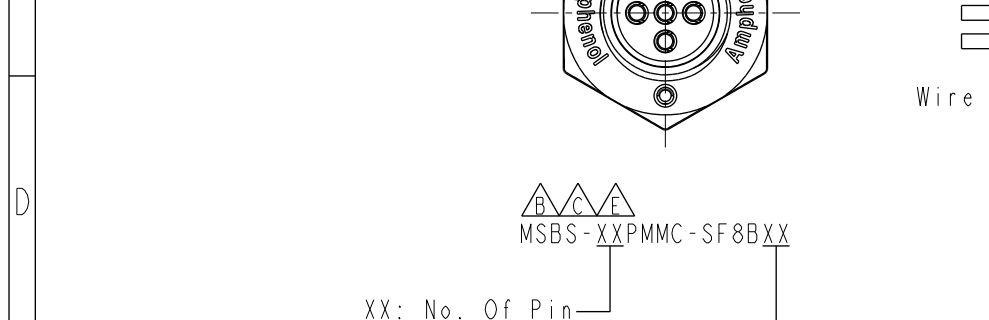
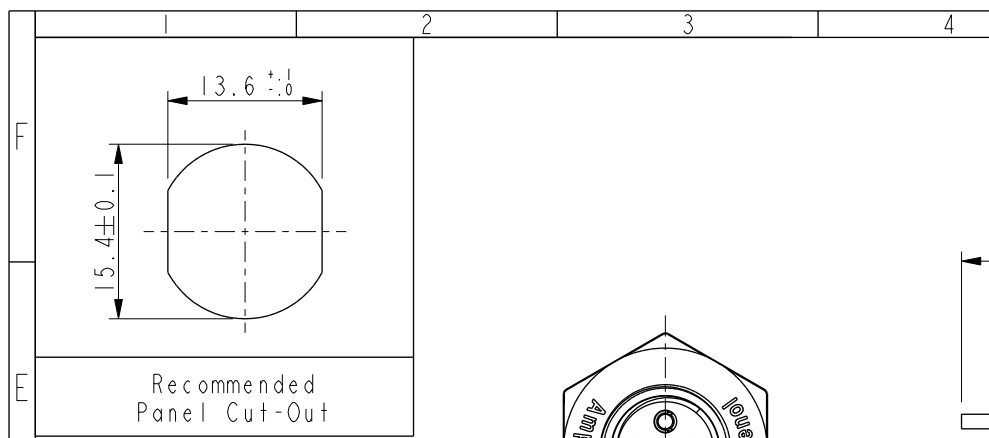
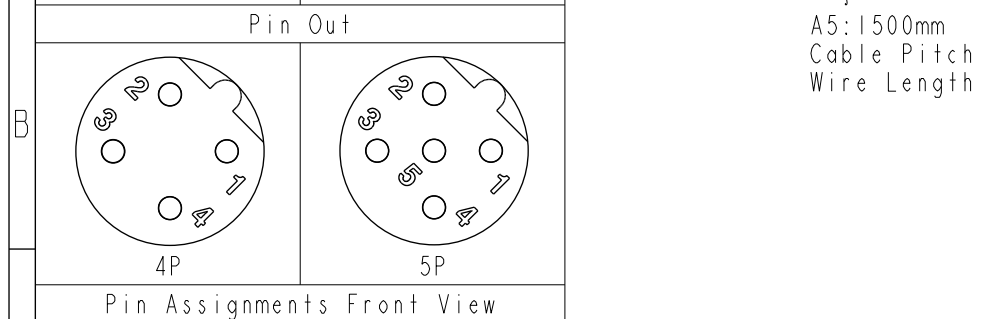


THIS DOCUMENT IS SUBJECT TO CHANGE WITHOUT NOTICE. IT IS CONFIDENTIAL AND A PROPERTY OF Amphenol LTW. DISCLOSURE TO THIRD PARTY HAS TO BE AUTHORIZED BY Amphenol LTW.

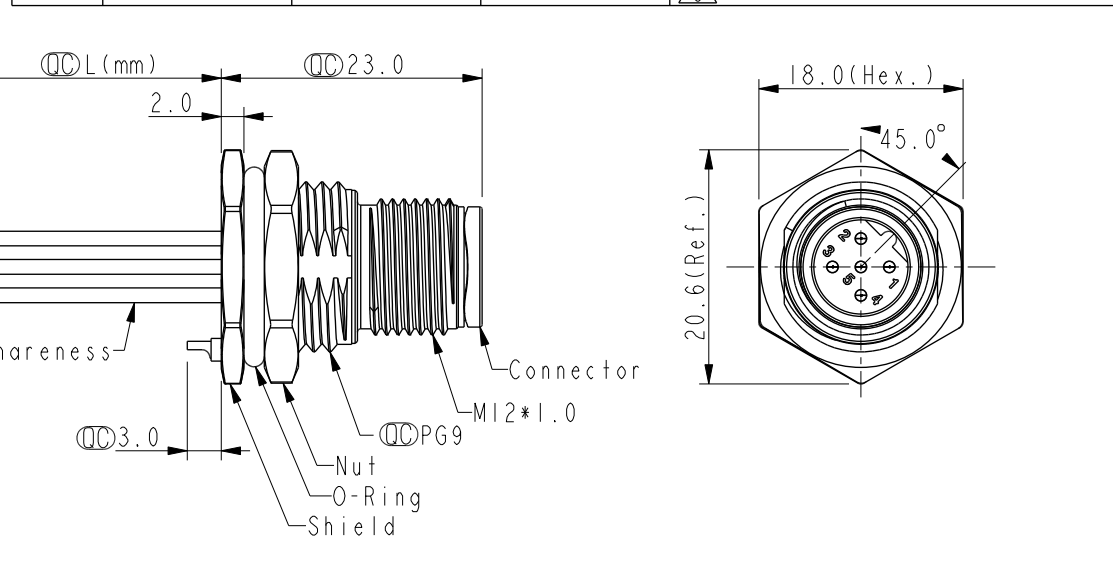
REV.	ECN NO.	DATE	SIGN	DESCRIPTION
E	C210241	2021/04/14	Ruru	X3
F	C221928	2022/12/21	Ruru	X1
G	C231032	2023/08/07	Ruru	X1



5	--	5	Gray	灰
4	Black	4	Black	黑
3	Blue	3	Blue	藍
2	White	2	White	白
1	Brown	1	Brown	棕
Pin #	Wire	Pin #	Wire	



UNIT:mm		TITLE	N SEN, M12 B -SHLD, SCREW RECEPTACLE, M, M, FI/PANEL CRIMP	
TOLERANCE		SCALE	3:2	SIZE A4
.X ±0.25		REV.	G	WC-REV. A.1
.XX ±0.1				
.XXX ±0.05				
ANGLES ±1°				



10:100mm	
15:150mm	
20:200mm	
95:950mm	
Cable Pitch Unit=50mm	
A0:1000mm	
A5:1500mm	
Cable Pitch Unit=100mm	
Wire Length (L):150~1500mm	

- Note: * RoHS Compliant
- * Important dimension
- * Waterproof rate: IP68, unmated 1m/24h
- IP69K, mated
- * Connector
 - Housing: Thermoplastic, Black
 - Pin: Copper alloy, Gold plated
 - * Shield: Metal
 - * Nut: Metal
 - * O-Ring: Rubber, Black
 - * Wire harness: UL1061, 22AWG
 - * For panel thickness max: 4.5mm
 - * O-Ring and nut are assembled on connectors
 - * Wire harness tolerance: 100mm: ±10mm
 - 100mm < L ≤ 300mm: ±15mm
 - 300mm < L ≤ 1000mm: ±20mm
 - 1000mm < L ≤ 1500mm: ±50mm

ITEM NO	DRAWN BY	DATE
DWG NO	Vicky	2019-09-24
	CHECKED BY	DATE
CUSTOMER	Rita	2019-09-24
ALTW	APPROVED BY	DATE
	Max	2019-09-24

Amphenol LTW
安費諾亮泰企業股份有限公司