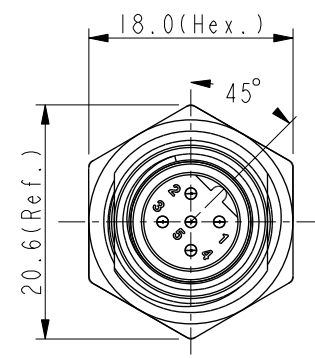
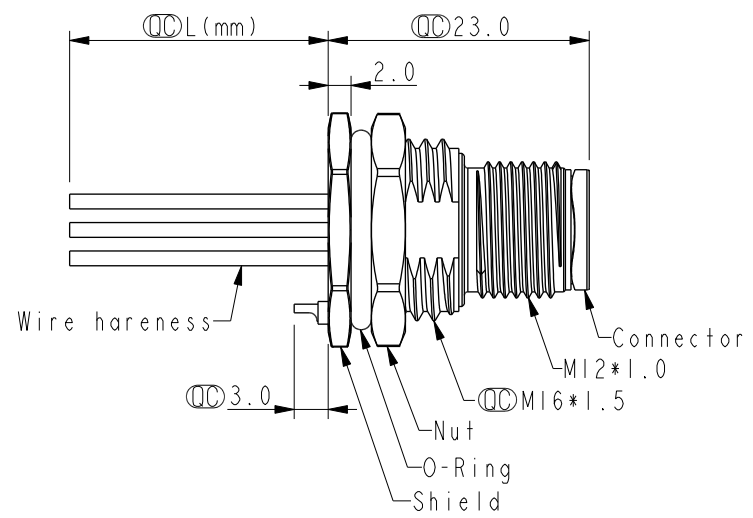
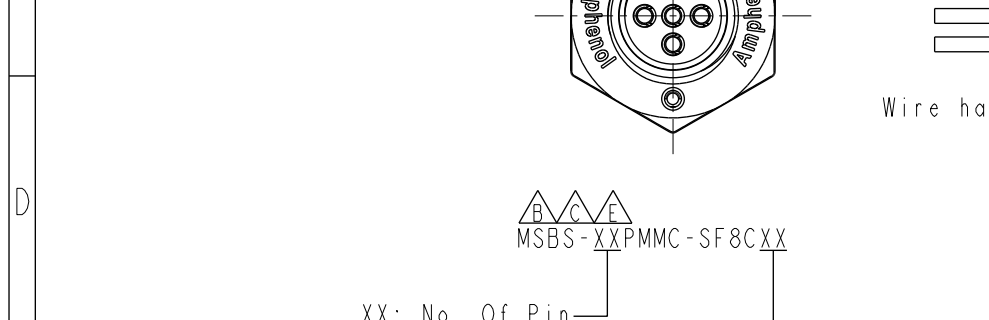
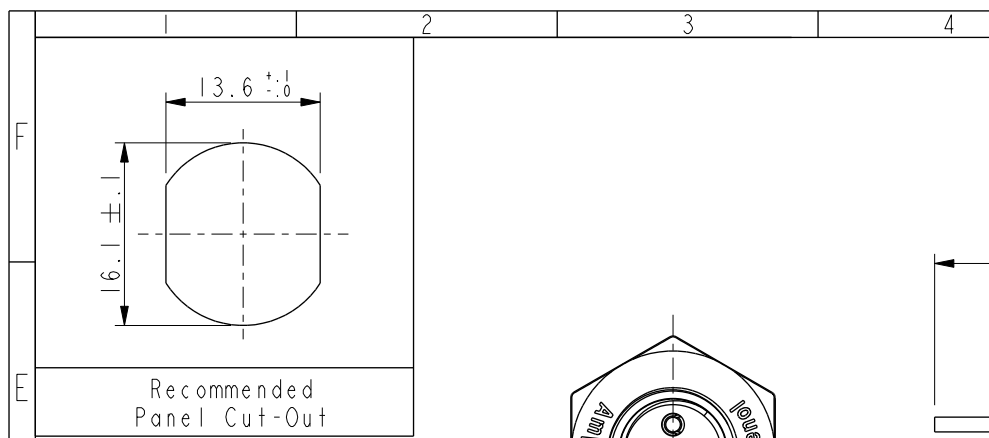


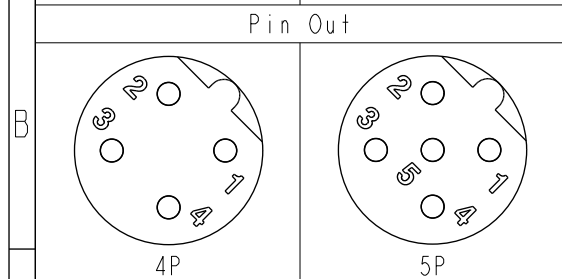
THIS DOCUMENT IS SUBJECT TO CHANGE WITHOUT NOTICE. IT IS CONFIDENTIAL AND A PROPERTY OF Amphenol LTW. DISCLOSURE TO THIRD PARTY HAS TO BE AUTHORIZED BY Amphenol LTW.

REV.	ECN NO.	DATE	SIGN	DESCRIPTION
E	C210241	2021/04/14	Ruru	X3
F	C221928	2022/12/21	Ruru	X1
G	C231032	2023/08/07	Ruru	X1



5	--	5	Gray	灰
4	Black	4	Black	黑
3	Blue	3	Blue	藍
2	White	2	White	白
1	Brown	1	Brown	棕

Pin #	Wire	Pin #	Wire
-------	------	-------	------



Pin Assignments Front View

10:100mm
15:150mm
20:200mm
95:950mm
Cable Pitch Unit=50mm
A0:1000mm
A5:1500mm
Cable Pitch Unit=100mm
Wire Length (L):150~1500mm

Note: **B C D E**
* RoHS Compliant
* **QC** Important dimension
* **F** Waterproof rate: IP68, unmated 1m/24h
* **G** IP69K, mated
* Connector
Housing: Thermoplastic, Black
Pin: Copper alloy, Gold plated
* Shield: Metal
* Nut: Metal
* O-Ring: Rubber, Black
* Wire harness: UL1061, 22AWG
* For panel thickness max: 4.5mm
* O-Ring and nut are assembled on connectors
* Wire harness tolerance: 100mm: ±10mm
100mm < L ≤ 300mm: ±15mm
300mm < L ≤ 1000mm: ±20mm
1000mm < L ≤ 1500mm: ±50mm

UNIT:mm		TITLE	N SEN, M12 B -SHLD, SCREW RECEPTACLE, M, M, FI/PANEL CRIMP E		
TOLERANCE	.X ±0.25 .XX ±0.1 .XXX ±0.05 ANGLES ±1°	SCALE	3:2	SIZE	A4
		REV.	G	WC-REV.	A.1
				QC	Inspection item

Amphenol LTW
安費諾亮泰企業股份有限公司

ITEM NO	DRAWN BY	DATE
DWG NO	CHECKED BY	DATE
CUSTOMER	APPROVED BY	DATE
ALTW	Max	2019-09-24