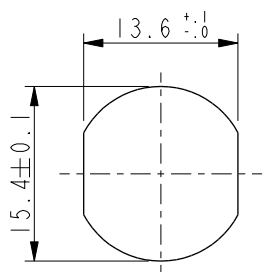
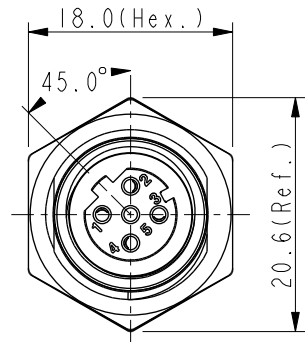
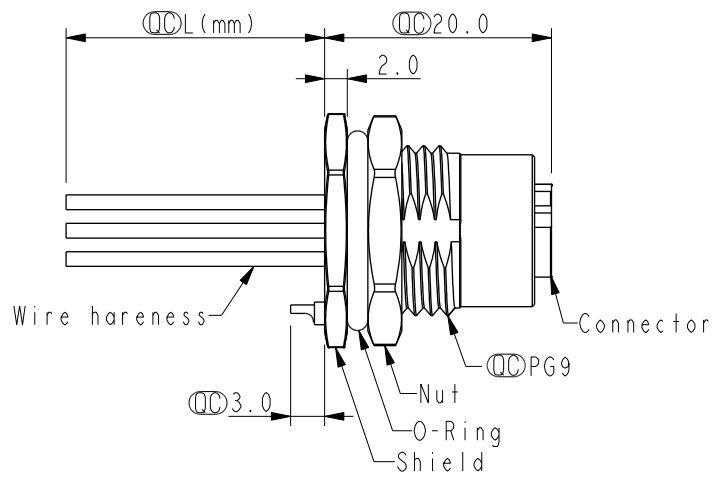
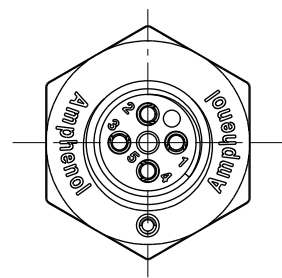


THIS DOCUMENT IS SUBJECT TO CHANGE WITHOUT NOTICE. IT IS CONFIDENTIAL AND A PROPERTY OF Amphenol LTW. DISCLOSURE TO THIRD PARTY HAS TO BE AUTHORIZED BY Amphenol LTW.

REV.	ECN NO.	DATE	SIGN	DESCRIPTION
E	C210241	2021/04/14	Ruru	\triangle X3
F	C221928	2022/12/21	Ruru	\triangle X1
G	C231032	2023/08/07	Ruru	\triangle X1



Recommended
Panel Cut-Out



\triangle B \triangle C \triangle E
MSDS-XXPFFC-SF8BXX

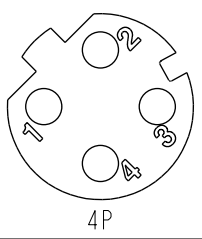
XX: No. Of Pin

10: 100mm
15: 150mm
20: 200mm
95: 950mm
Cable Pitch Unit=50mm
A0: 1000mm
A5: 1500mm
Cable Pitch Unit=100mm
Wire Length (L): 150~1500 mm

Note: \triangle B \triangle C \triangle D \triangle E
* RoHS Compliant
* \circ Important dimension
 \triangle * Waterproof rate: IP68, unmated 1m/24h
 \triangle IP69K, mated
* Connector
Housing: Thermoplastic, Black
Pin: Copper alloy, Gold plated
O-Ring: Rubber, Green
* Shield: Metal
* Nut: Metal
* O-Ring: Rubber, Black
* Wire harness: UL1061, 22AWG
* For panel thickness max: 4.5mm
* O-Ring and nut are assembled on connectors
* Wire harness tolerance: 100mm: \pm 10mm
100mm < L \leq 300mm: \pm 15mm
300mm < L \leq 1000mm: \pm 20mm
1000mm < L \leq 1500mm: \pm 50mm

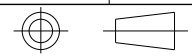
4	Black	黑
3	Blue	藍
2	White	白
1	Brown	棕

Pin #	Wire
Pin Out	



Pin Assignments
Front View

UNIT:mm



TOLERANCE	
.X	\pm 0.25
.XX	\pm 0.1
.XXX	\pm 0.05
ANGLES	\pm 1°

TITLE N SEN, M12 D -SHLD, SCREW RECEPTACLE, F, F, FI/PANEL CRIMP \triangle E			
SCALE 3:2	SIZE A4	SHEET 1 OF 1	
REV. G	WC-REV. A.1	\circ Inspection item	

Amphenol LTW
安費諾亮泰企業股份有限公司

ITEM NO	DRAWN BY Vicky	DATE 2019-09-24
DWG NO \triangle MSDS-XXPFFC-SF8BXX	CHECKED BY Rita	DATE 2019-09-24
CUSTOMER ALTW	APPROVED BY Max	DATE 2019-09-24