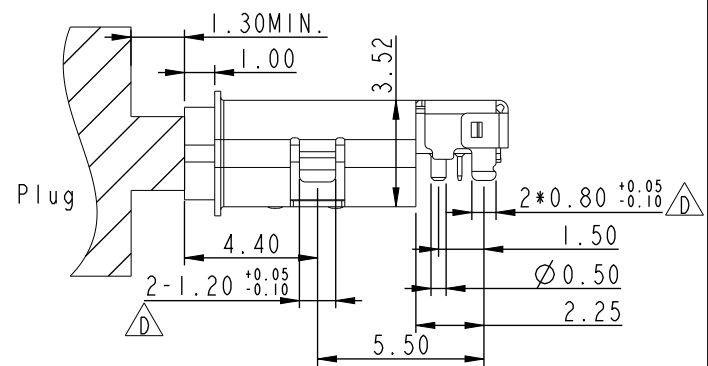
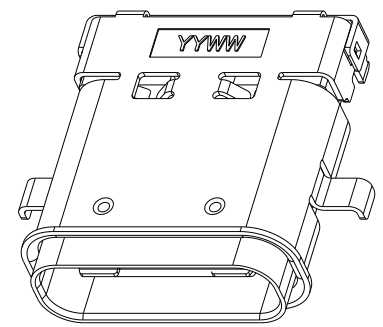


REV.	ECN NO.	DATE	SIGN	DESCRIPTION
C	C210552	2021/04/07	Ruru	X2
D	C230839	2023/07/03	Alex	X5
E	C230362	2023/08/21	Alex	X1



Pin	Signal Name	Mating Sequence	Pin	Signal Name	Mating Sequence
A1	GND	First	B12	GND	First
A2	SSTXp1	Second	B11	SSRXp1	Second
A3	SSTXn1	Second	B10	SSRXn1	Second
A4	Vbus	First	B9	Vbus	First
A5	CC1	Second	B8	SBU2	Second
A6	Dp1	Second	B7	Dn2	Second
A7	Dn1	Second	B6	Dp2	Second
A8	SBU1	Second	B5	CC2	Second
A9	Vbus	First	B4	Vbus	First
A10	SSRXn2	Second	B3	SSTXn2	Second
A11	SSRXp2	Second	B2	SSTXp2	Second
A12	GND	First	B1	GND	First
SHELL		GND	SHELL		GND

RECOMMENDED P.C.B LAYOUT
TOLERANCE: ±0.05 TOP VIEW

UNIT:mm		TITLE	USB, C TYPE, FRONT FASTENED F, F, SMT+DIP, QUICK
TOLERANCE	±0.3 XX ±0.2 XXX ±0.1 ANGLES ±3°	SCALE	4:1
		SIZE	A4
		SHEET	1 OF 3
		REV.	E
		WC-REV.	A.3
		QC	Inspection item

Amphenol LTW
安費諾亮泰企業股份有限公司

ITEM NO	DRAWN BY	DATE
DWG NO	Ruru	2020-08-25
CUSTOMER	CHECKED BY	DATE
ALTW	Rita	2020-08-25
	APPROVED BY	DATE
	Max	2020-08-25

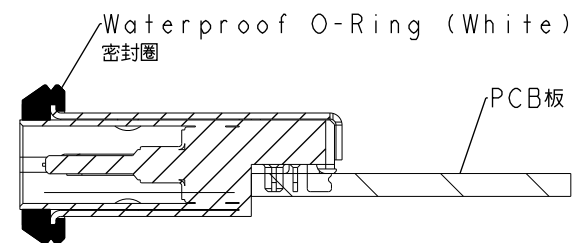
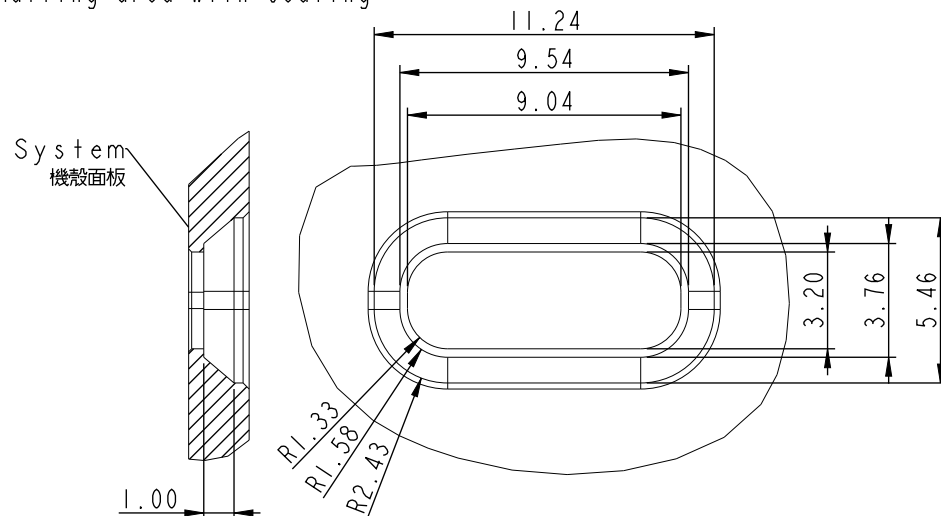
THIS DOCUMENT IS SUBJECT TO CHANGE WITHOUT NOTICE. IT IS CONFIDENTIAL AND A PROPERTY OF Amphenol LTW. DISCLOSURE TO THIRD PARTY HAS TO BE AUTHORIZED BY Amphenol LTW.

THIS DOCUMENT IS SUBJECT TO CHANGE WITHOUT NOTICE. IT IS CONFIDENTIAL AND A PROPERTY OF Amphenol LTW. DISCLOSURE TO THIRD PARTY HAS TO BE AUTHORIZED BY Amphenol LTW.

Recommended open dimensions of case.

Tolerance: $\pm 0.03\text{mm}$

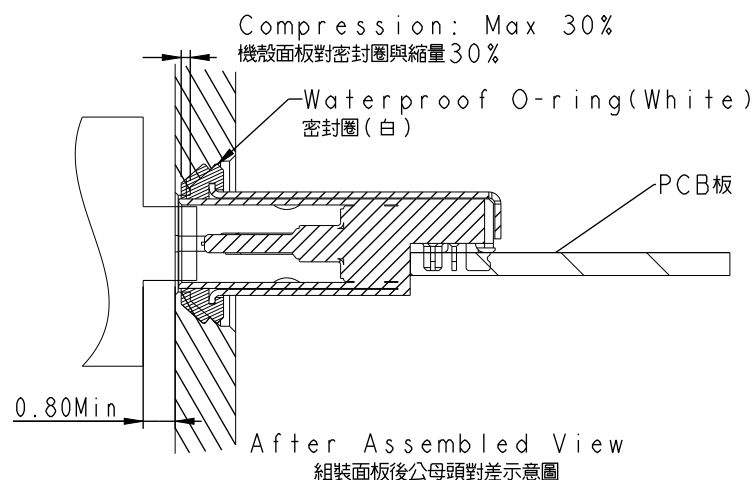
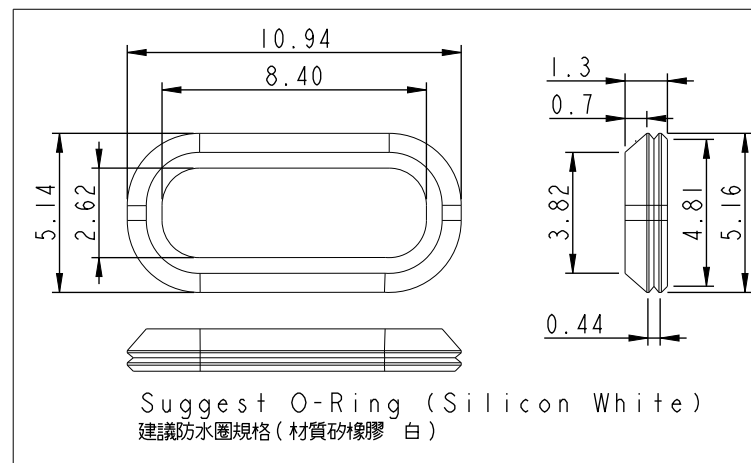
Matting area with sealing



Assembly Way
組裝方式，左右方向裝配

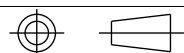
Note:

- * IP: IP67
- * Connector: Thermoplastic
- * Pin: Copper Alloy, 30u" Gold
- * Shield: Stainless (Inner)
Stainless & Nickel Plating (Out)
- * Operating Temperature: -40°C To $+85^{\circ}\text{C}$
- * All specifications are in compliance with the USB Association's specifications.



After Assembled View
組裝面板後公母頭對差示意圖

UNIT:mm



TOLERANCE
.X ± 0.3
.XX ± 0.2
.XXX ± 0.1
ANGLES $\pm 3^{\circ}$

TITLE
USB, C TYPE, FRONT FASTENED
F, F, SMT+DIP, QUICK

SCALE 4:1 SIZE A4 SHEET 2 OF 3
REV. E WC-REV. A.3 QC: Inspection item

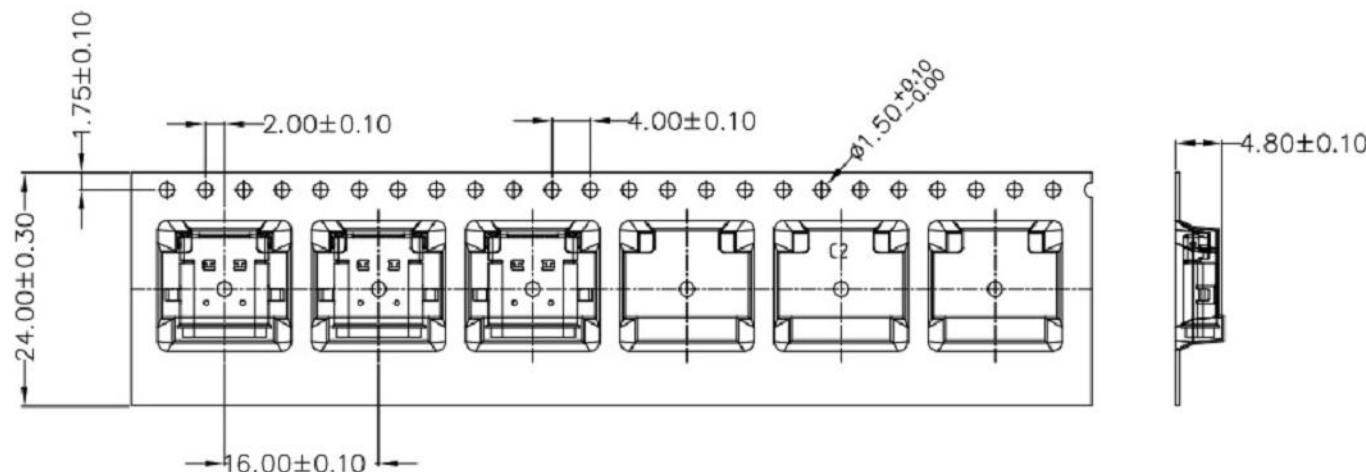
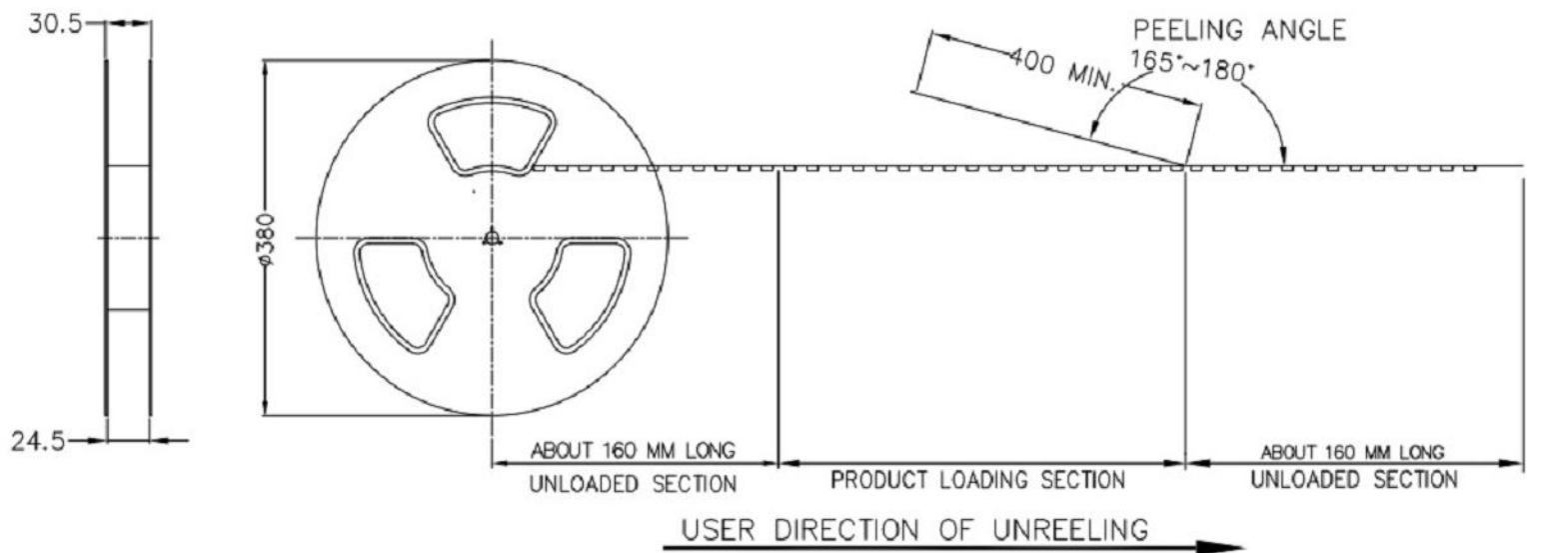
Amphenol LTW
安費諾亮泰企業股份有限公司

ITEM NO
DWG NO UC-00PFFH-QF700X
CUSTOMER ALTW

DRAWN BY Ruru
CHECKED BY Rita
APPROVED BY Max

DATE 2020-08-25
DATE 2020-08-25
DATE 2020-08-25

THIS DOCUMENT IS SUBJECT TO CHANGE WITHOUT NOTICE. IT IS CONFIDENTIAL AND A PROPERTY OF Amphenol LTW. DISCLOSURE TO THIRD PARTY HAS TO BE AUTHORIZED BY Amphenol LTW.



* 1K PCS (Connector) In A Tape&Reel
5 PCS Tape&Reel In A Carton
(5K PCS/Carton)

UNIT:mm				TITLE USB, C TYPE, FRONT FASTENED F, F, SMT+DIP, QUICK			<div>Amphenol LTW</div> <div>安費諾亮泰企業股份有限公司</div>		ITEM NO		DRAWN BY Ruru		DATE 2020-08-25		
TOLERANCE .X ±0.3 .XX ±0.2 .XXX ±0.1 ANGLES ±3°		SCALE 4:1							SIZE A4		SHEET 3 OF 3		DWG NO UC-00PFFH-QF700X		CHECKED BY Rita
		REV. E		WC-REV. A.3		QC:Inspection item			CUSTOMER ALTW		APPROVED BY Max		DATE 2020-08-25		

Amphenol LTW
安費諾亮泰企業股份有限公司