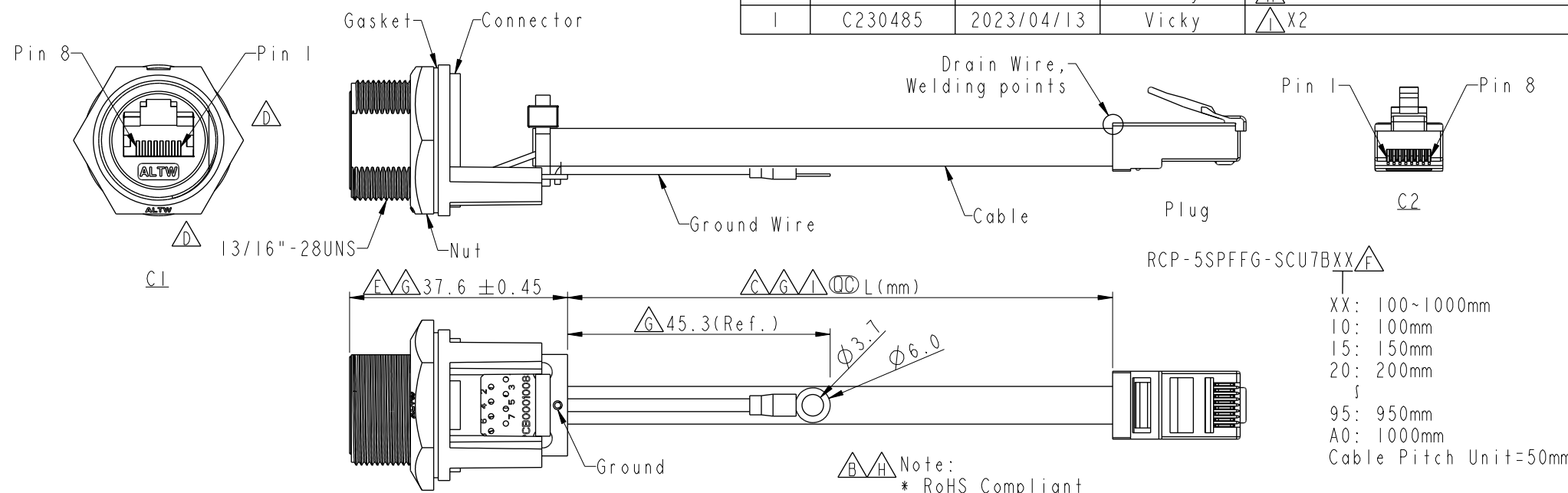


THIS DOCUMENT IS SUBJECT TO CHANGE WITHOUT NOTICE. IT IS CONFIDENTIAL AND A PROPERTY OF Amphenol LTW. DISCLOSURE TO THIRD PARTY HAS TO BE AUTHORIZED BY Amphenol LTW.

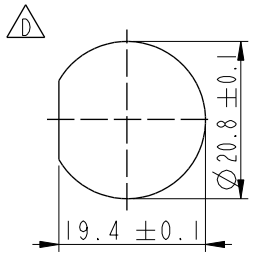
REV.	ECN NO.	DATE	SIGN	DESCRIPTION
G	C201915	2020/12/04	Ruru	△G X3
H	C220799	2022/05/23	Vicky	△H X2
I	C230485	2023/04/13	Vicky	△I X2



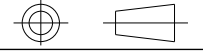
RCP-5SPFFG-SCU7BXX △F
 XX: 100~1000mm
 10: 100mm
 15: 150mm
 20: 200mm
 ↓
 95: 950mm
 A0: 1000mm
 Cable Pitch Unit=50mm

- △B △H Note:
 * RoHS Compliant
 * (C) Important dimension
 * C1
 △I Waterproof rate: IP67, unmated
 Housing: Thermoplastic, Black, RJ45 jack, Shielded
 Nut: Thermoplastic, Black
 Gasket: Rubber, Gray
 * C2
 Waterproof rate: Non-Waterproof
 Plug: RJ45, Shielded
 * Use with waterproof cap or dust cap
 Panel thickness max: 3.0mm
 * Use without waterproof cap or dust cap
 Panel thickness max: 4.2mm
 * Gasket and nut are assembled on connectors
 * Wire: UL1015, 20AWG
 * Cable: Cat.5E, 24#*4P+MY+D+AL, PVC Jacket, Black, OD6.5mm
 * Cable length tolerance: 100mm: ±10mm
 100mm < L ≤ 300mm: ±15mm
 300mm < L ≤ 1000mm: ±20mm

Ground	Wire(20AWG)	Green 綠	Terminal
Shield	Drain Wire	接地線	Shield
8	Brown	棕	8
7	White/Brown	白/棕	7
6	Green	綠	6
5	White/Blue	白/藍	5
4	Blue	藍	4
3	White/Green	白/綠	3
2	Orange	橘	2
1	White/Orange	白/橘	1
C1	Wire Color		C2



UNIT: mm
 TOLERANCE
 .X ±0.25
 .XX ±0.1
 .XXX ±0.05
 ANGLES ±1°



TITLE RJ, C PLASTIC, C5E SHLD FRONT FASTENED, F, PNL W/G, SCREW			
SCALE 1:1	SIZE A4	SHEET 1 OF 1	
REV. 1	WC-REV. A.6	(C) Inspection item	

Amphenol LTW
 安費諾亮泰企業股份有限公司

ITEM NO	DRAWN BY Ruru	DATE 2019-09-16
DWG NO RCP-5SPFFG-SCU7BXX	CHECKED BY Rita	DATE 2019-09-16
CUSTOMER ALTW	APPROVED BY Max	DATE 2019-09-16