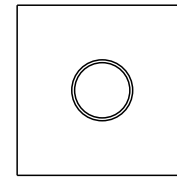
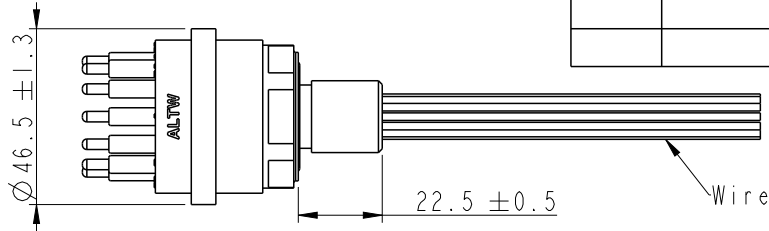


|      |         |            |       |                   |
|------|---------|------------|-------|-------------------|
| REV. | ECN NO. | DATE       | SIGN  | DESCRIPTION       |
| B    | C230296 | 2023/05/02 | Eagle | $\triangle$ B x 1 |

DT-ACN-XXRMM-RHA30

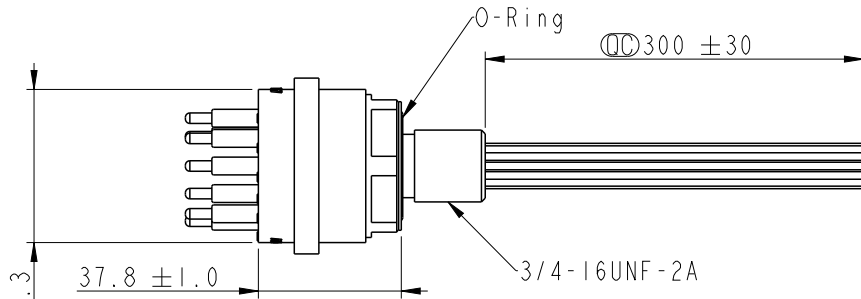
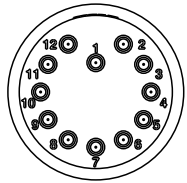
G3: 3Pin  
G4: 4Pin  
G6: 6Pin  
08: 8Pin  
12: 12Pin

For 12P

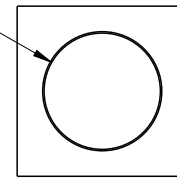


6.40 (Min.)/11.1 (Max.)

Panel cut out (screw type)



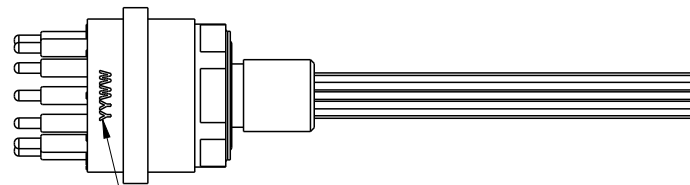
$\phi 20.5 \pm 0.1$



R0.25 (Max.)

6.40 (Min.)/11.1 (Max.)

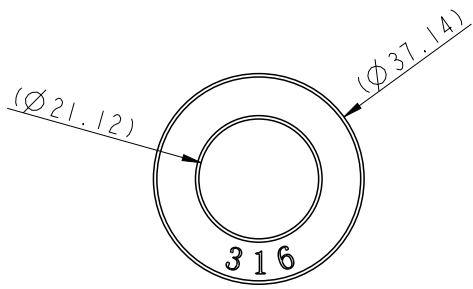
Panel cut out (hole type)



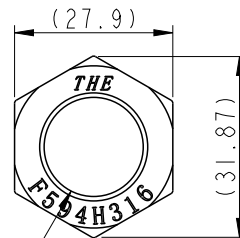
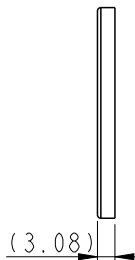
$\odot$  Date Code (Laser mark)  
YY (年)  
WW (週)  
上下左右置中

Note:

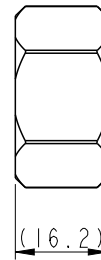
- \*  $\odot$  Important Dimension.
- \* Waterproof Rate: Abyssopelagic 4000M, Mated.
- \* Connector  
Housing: Rubber, Black.  
Pin: Copper Alloy, Gold Plated.  
O-Ring: Rubber, Black.  
Shield: Metal.  
Nut: Metal.  
Washer: Metal.
- \* Wire: UL10393 18 AWG, OD 1.81mm
- \* Washer and nut are packed separately in PE bag.



Washer



Nut



3/4-16UNF-2B

|                     |  |
|---------------------|--|
| UNIT: mm            |  |
| TOLERANCE $\pm 0.5$ |  |

|   |                |                           |  |
|---|----------------|---------------------------|--|
| TITLE<br>DT, ABY CIRCULAR MINI<br>REAR FASTENED, M, M |                |                           |  |
| SCALE<br>1:1  | SIZE<br>A4     | SHEET<br>1 OF 5           |  |
| REV.<br>B   | WC-REV.<br>A.5 | $\odot$ : Inspection item |  |

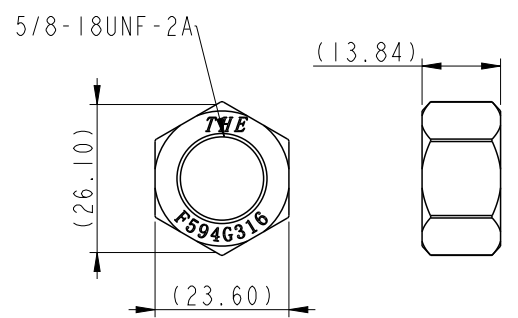
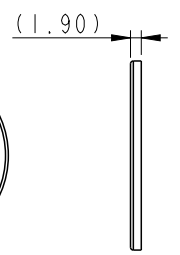
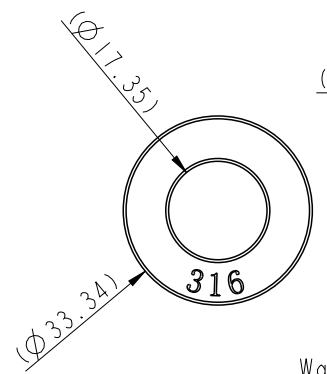
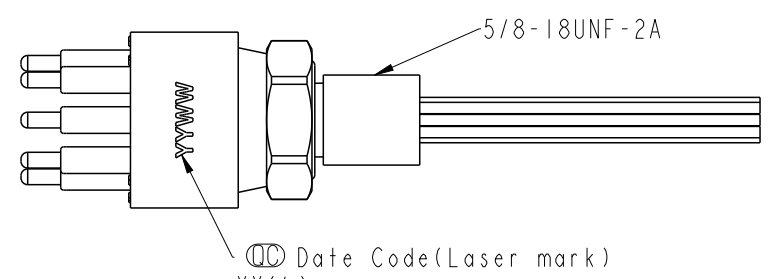
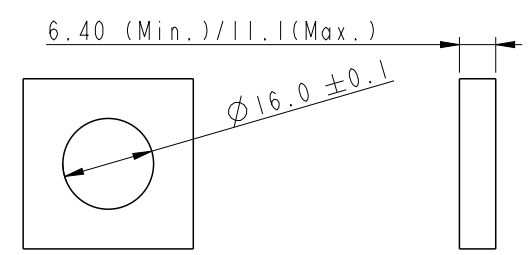
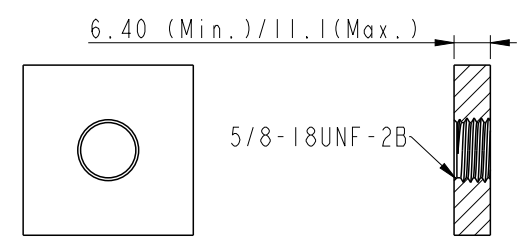
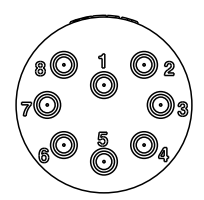
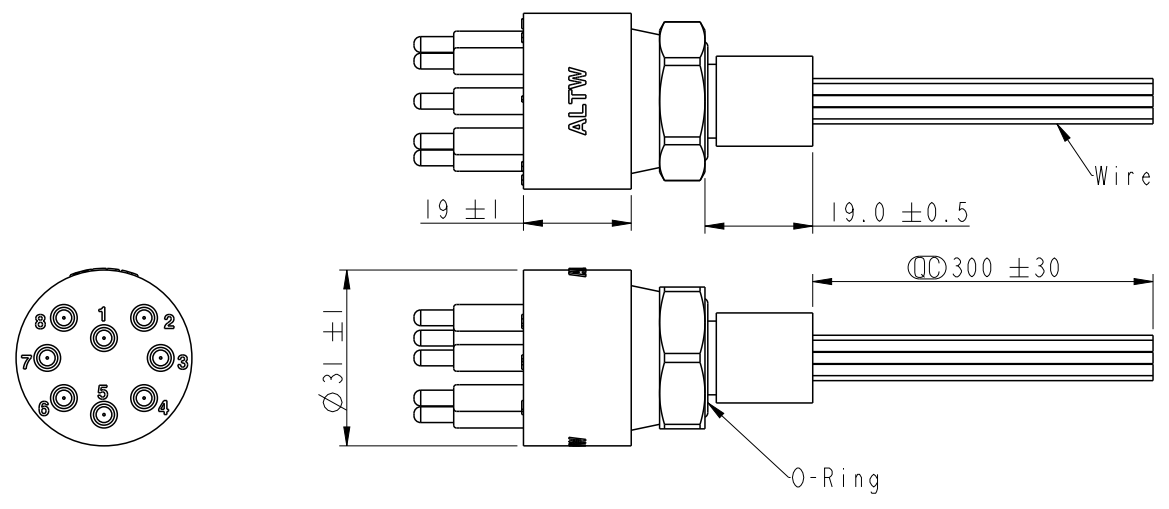
**Amphenol LTW**  
安費諾亮泰企業股份有限公司

|                               |                    |                    |
|-------------------------------|--------------------|--------------------|
| ITEM NO.                      | DRAWN BY<br>Eagle  | DATE<br>2022/11/08 |
| DWG NO.<br>DT-ACN-XXRMM-RHA30 | CHECKED BY<br>Aric | DATE<br>2022/11/08 |
| CUSTOMER<br>ALTW              | APPROVED BY<br>Max | DATE<br>2022/11/08 |

THIS DOCUMENT IS SUBJECT TO CHANGE WITHOUT NOTICE. IT IS CONFIDENTIAL AND A PROPERTY OF AMPHENOL LTW. DISCLOSURE TO THIRD PARTY HAS TO BE AUTHORIZED BY AMPHENOL LTW.

THIS DOCUMENT IS SUBJECT TO CHANGE WITHOUT NOTICE. IT IS CONFIDENTIAL AND A PROPERTY OF AMPHENOL LTW. DISCLOSURE TO THIRD PARTY HAS TO BE AUTHORIZED BY AMPHENOL LTW.

For 6P/8P



Washer

Nut

|                |  |  |
|----------------|--|--|
| UNIT:mm        |  |  |
| TOLERANCE ±0.5 |  |  |

|   |                |                    |  |
|---|----------------|--------------------|--|
| TITLE<br>DT, ABY CIRCULAR MINI<br>REAR FASTENED, M, M |                |                    |  |
| SCALE<br>1:1  | SIZE<br>A4     | SHEET<br>2 OF 5    |  |
| REV.<br>B   | WC-REV.<br>A.5 | ☉: Inspection item |  |

**Amphenol LTW**  
安費諾亮泰企業股份有限公司

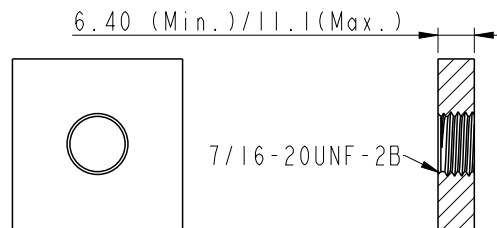
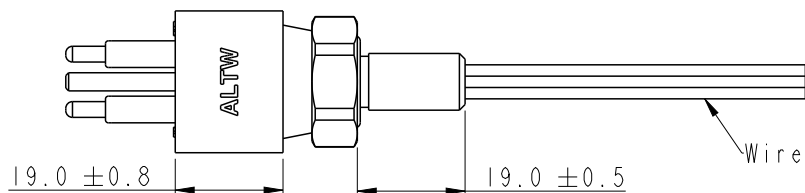
|                  |                              |
|------------------|------------------------------|
| ITEM NO          | DWG NO<br>DT-ACN-XXRMM-RHA30 |
| CUSTOMER<br>ALTW |                              |

|                    |                    |
|--------------------|--------------------|
| DRAWN BY<br>Eagle  | CHECKED BY<br>Aric |
| APPROVED BY<br>Max |                    |

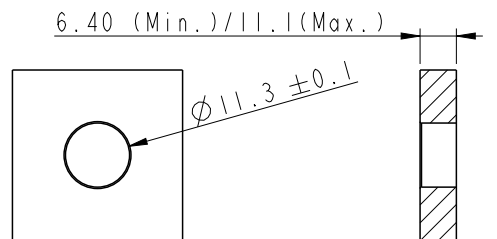
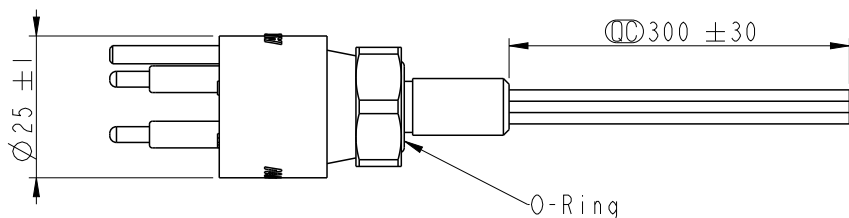
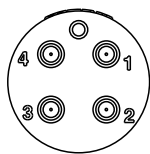
|                    |                    |
|--------------------|--------------------|
| DATE<br>2022/11/08 | DATE<br>2022/11/08 |
| DATE<br>2022/11/08 | DATE<br>2022/11/08 |

THIS DOCUMENT IS SUBJECT TO CHANGE WITHOUT NOTICE. IT IS CONFIDENTIAL AND A PROPERTY OF Amphenol LTW. DISCLOSURE TO THIRD PARTY HAS TO BE AUTHORIZED BY Amphenol LTW.

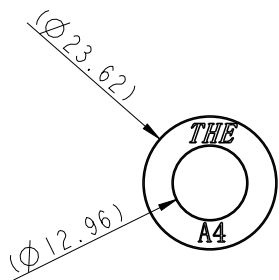
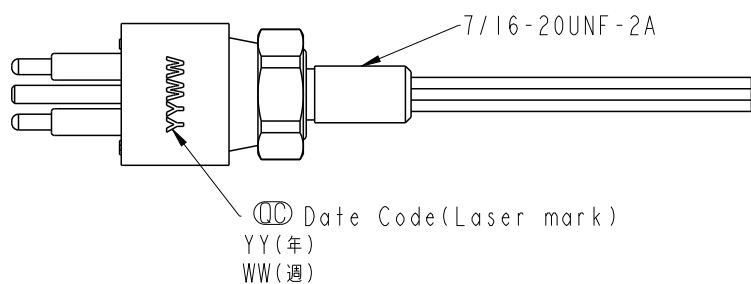
For 3P/4P



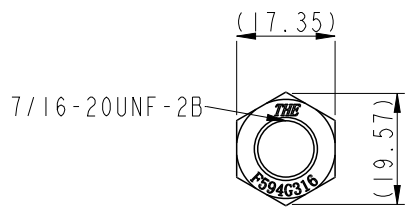
Panel cut out (screw type)



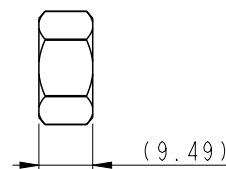
Panel cut out (hole type)



Washer



Nut

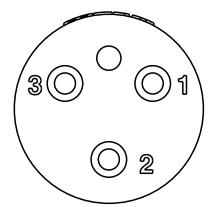


UNIT: mm  
 TOLERANCE ±0.5

|   |                |                     |  |
|---|----------------|---------------------|--|
| TITLE<br>DT, ABY CIRCULAR MINI<br>REAR FASTENED, M, M |                |                     |  |
| SCALE<br>1:1  | SIZE<br>A4     | SHEET<br>3 OF 5     |  |
| REV.<br>B   | WC-REV.<br>A.5 | QC: Inspection item |  |

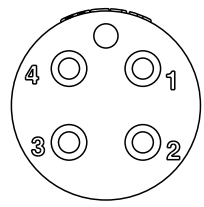
**Amphenol LTW**  
 安費諾亮泰企業股份有限公司

|                              |                    |                    |
|------------------------------|--------------------|--------------------|
| ITEM NO                      | DRAWN BY<br>Eagle  | DATE<br>2022/11/08 |
| DWG NO<br>DT-ACN-XXRMM-RHA30 | CHECKED BY<br>Aric | DATE<br>2022/11/08 |
| CUSTOMER<br>ALTW             | APPROVED BY<br>Max | DATE<br>2022/11/08 |



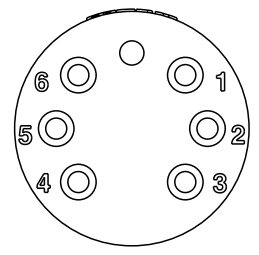
Pin Assignment(Front View)

- Pin Out (3P)  
 1 Black(黑) 18AWG  
 2 White(白) 18AWG  
 3 Red(紅) 18AWG



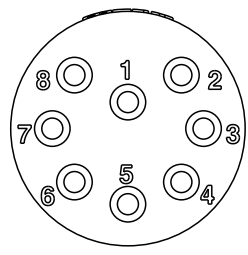
Pin Assignment(Front View)

- Pin Out (4P)  
 1 Black(黑) 18AWG  
 2 White(白) 18AWG  
 3 Red(紅) 18AWG  
 4 Green(綠) 18AWG



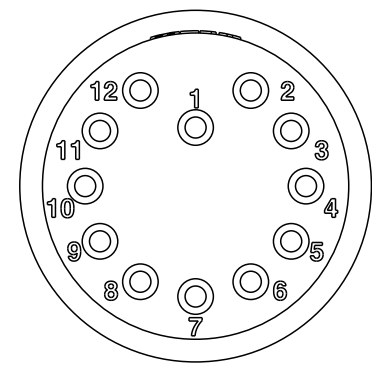
Pin Assignment(Front View)

- Pin Out (6P)  
 1 Black(黑) 18AWG  
 2 White(白) 18AWG  
 3 Red(紅) 18AWG  
 4 Green(綠) 18AWG  
 5 Orange(橙) 18AWG  
 6 Blue(藍) 18AWG



Pin Assignment(Front View)

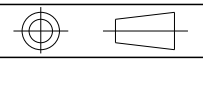
- Pin Out (8P)  
 1 Black(黑) 18AWG  
 2 White(白) 18AWG  
 3 Red(紅) 18AWG  
 4 Green(綠) 18AWG  
 5 Orange(橙) 18AWG  
 6 Blue(藍) 18AWG  
 7 White/Black(白/黑) 18AWG  
 8 Red/Black(紅/黑) 18AWG



Pin Assignment(Front View)

- Pin Out (12P)  
 1 Black(黑) 18AWG  
 2 White(白) 18AWG  
 3 Red(紅) 18AWG  
 4 Green(綠) 18AWG  
 5 Orange(橙) 18AWG  
 6 Blue(藍) 18AWG  
 7 White/Black(白/黑) 18AWG  
 8 Red/Black(紅/黑) 18AWG  
 9 Green/Black(綠/黑) 18AWG  
 10 Orange/Black(橙/黑) 18AWG  
 11 Blue/Black(藍/黑) 18AWG  
 12 Black/White(黑/白) 18AWG

UNIT:mm  
 TOLERANCE



TITLE DT, ABY CIRCULAR MINI REAR FASTENED, M, M

**Amphenol LTW**

ITEM NO  
 DWG NO DT-ACN-XXRMM-RHA30

DRAWN BY Eagle  
 CHECKED BY Aric

DATE 2022/11/08  
 DATE 2022/11/08

SCALE 1:2 SIZE A4 SHEET 4 OF 5  
 REV. B WC-REV. Inspection item

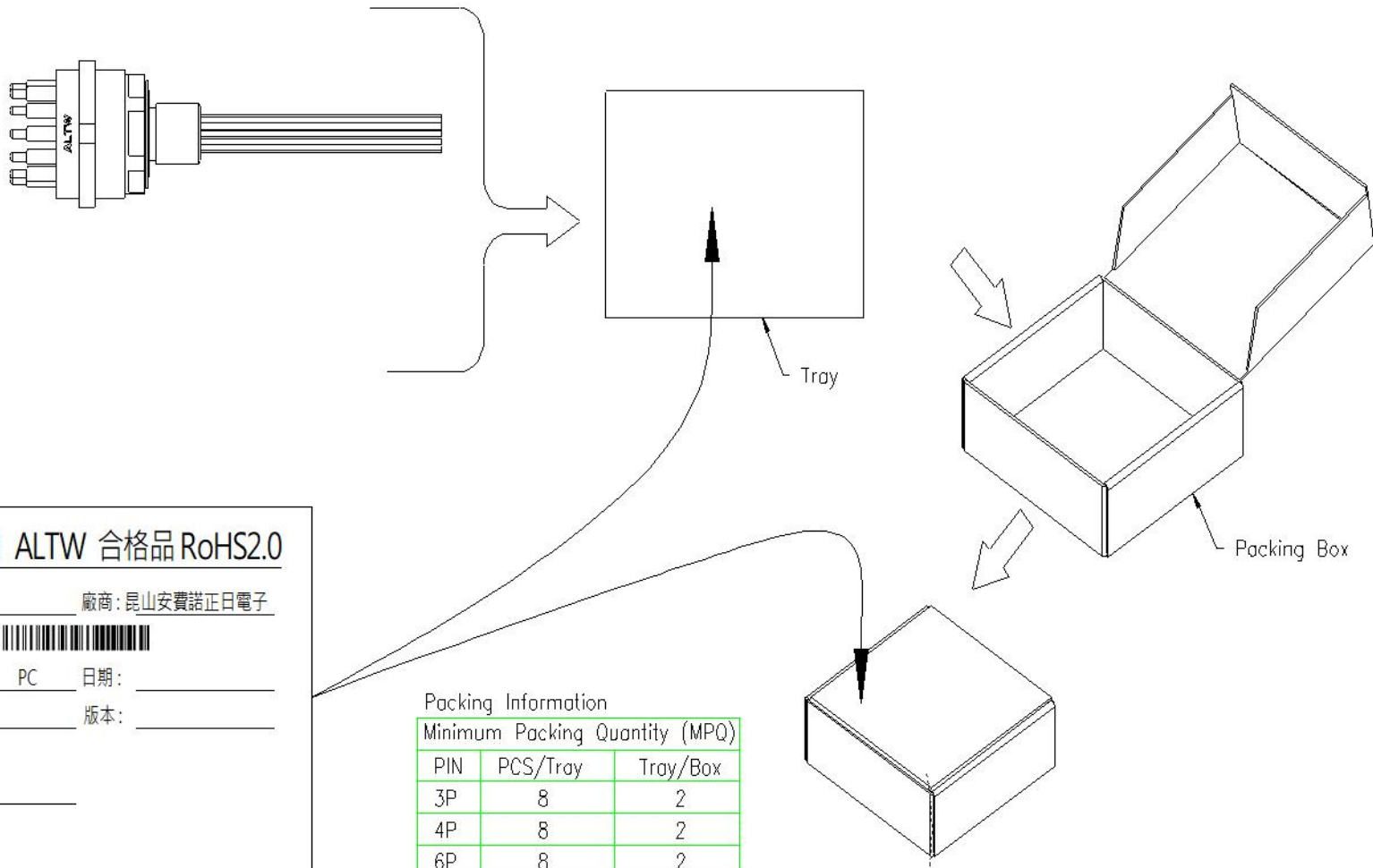
安費諾亮泰企業股份有限公司

CUSTOMER ALTW

APPROVED BY Max

DATE 2022/11/08

△



年 月 ALTW 合格品 RoHS2.0

料號: \_\_\_\_\_ 廠商: 昆山安費諾正日電子

數量: \_\_\_\_\_ PC 日期: \_\_\_\_\_

Lot No: \_\_\_\_\_ 版本: \_\_\_\_\_

採購單號: \_\_\_\_\_

廠商料號: \_\_\_\_\_

Packing Information

| Minimum Packing Quantity (MPQ) |          |          |
|--------------------------------|----------|----------|
| PIN                            | PCS/Tray | Tray/Box |
| 3P                             | 8        | 2        |
| 4P                             | 8        | 2        |
| 6P                             | 8        | 2        |
| 8P                             | 8        | 2        |
| 12P                            | 8        | 1        |

Connector will be packed in PE bag if order is less than MPQ

|                                |  |                |                 |                                      |                              |                    |                    |
|--------------------------------|--|----------------|-----------------|--------------------------------------|------------------------------|--------------------|--------------------|
| UNIT: mm<br>TOLERANCE ±0.5<br> | TITLE<br>DT, ABY CIRCULAR MINI REAR FASTENED, M, M |                |                 | <b>Amphenol LTW</b><br>安費諾亮泰企業股份有限公司 | ITEM NO                      | DRAWN BY<br>Eagle  | DATE<br>2022/11/08 |
|                                | SCALE<br>1:1                                       | SIZE<br>A4     | SHEET<br>5 OF 5 |                                      | DWG NO<br>DT-ACN-XXRMM-RHA30 | CHECKED BY<br>Aric | DATE<br>2022/11/08 |
|                                | REV.<br>B  | WC-REV.<br>A.5 | Inspection item |                                      | CUSTOMER<br>ALTW             | APPROVED BY<br>Max | DATE<br>2022/11/08 |