

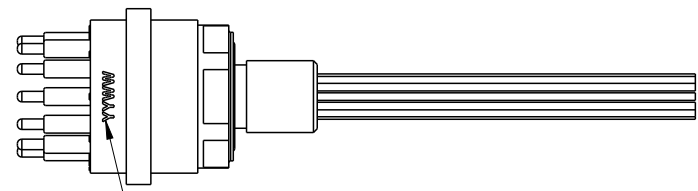
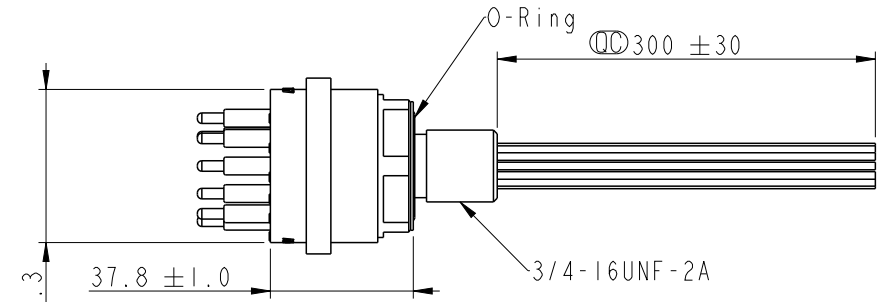
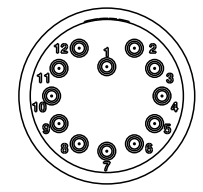
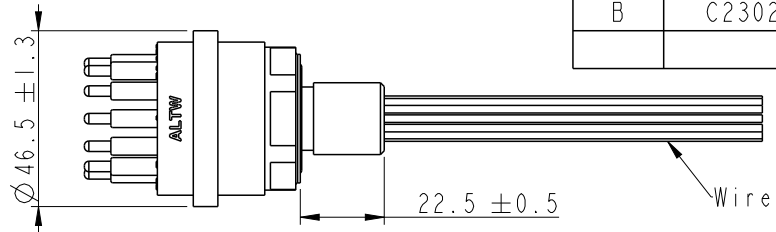
THIS DOCUMENT IS SUBJECT TO CHANGE WITHOUT NOTICE. IT IS CONFIDENTIAL AND A PROPERTY OF AMPHENOL LTW. DISCLOSURE TO THIRD PARTY HAS TO BE AUTHORIZED BY AMPHENOL LTW.

| REV. | ECN NO. | DATE | SIGN | DESCRIPTION |
|------|---------|------------|-------|-----------------|
| A | | 2022/09/30 | Eagle | Rev.01 to Rev.A |
| B | C230296 | 2023/05/02 | Eagle | △ B x I |

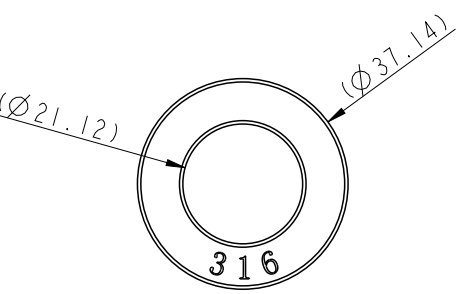
DT-HCN-XXRMM-RHA30

G3: 3Pin
G4: 4Pin
G6: 6Pin
08: 8Pin
12: 12Pin

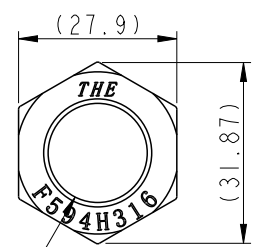
For 12P



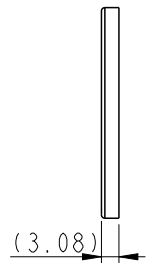
☉ Date Code (Laser mark)
YY (年)
WW (週)
上下左右置中



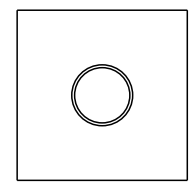
Washer



Nut

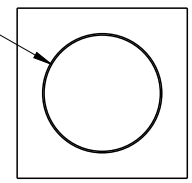
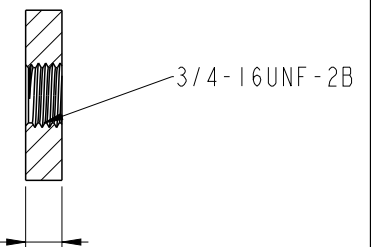


3/4-16UNF-2B



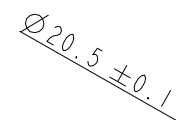
6.40 (Min.)/11.1 (Max.)

Panel cut out (screw type)



6.40 (Min.)/11.1 (Max.)

Panel cut out (hole type)



- Note:
- * ☉ Important Dimension.
 - * Waterproof Rate: Hadopelagic 7000M, Mated.
 - * Connector
Housing : Rubber, Black.
Pin : Copper Alloy, Gold Plated.
O-Ring: Rubber, Black.
Shield: Metal.
Nut: Metal.
Washer: Metal.
 - * Wire: UL10393 18 AWG, OD 1.81mm
 - * Washer and nut are packed separately in PE bag.

| | | |
|----------------|--|--|
| UNIT: mm | | |
| TOLERANCE ±0.5 | | |

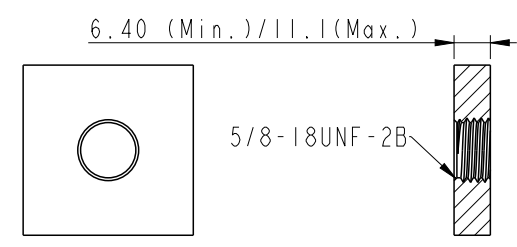
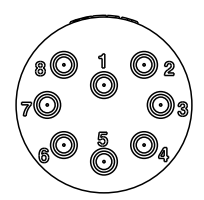
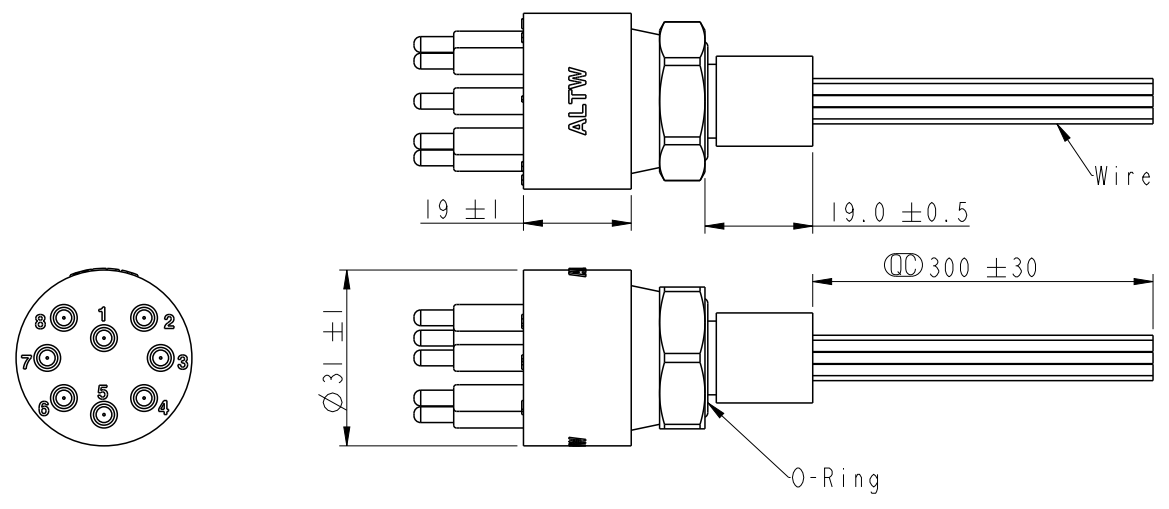
| | | | |
|---|----------------|--------------------|--|
| TITLE DT, HAD CIRCULAR MINI REAR FASTENED, M, M | | | |
| SCALE 1:1 | SIZE A4 | SHEET 1 OF 5 | |
| REV. B | WC-REV. A.5 | ☉: Inspection item | |

Amphenol LTW
安費諾亮泰企業股份有限公司

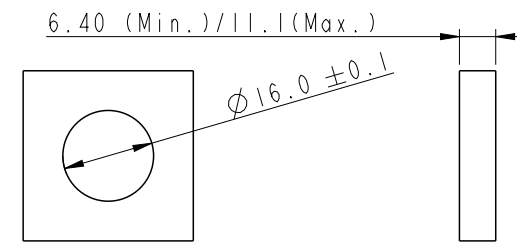
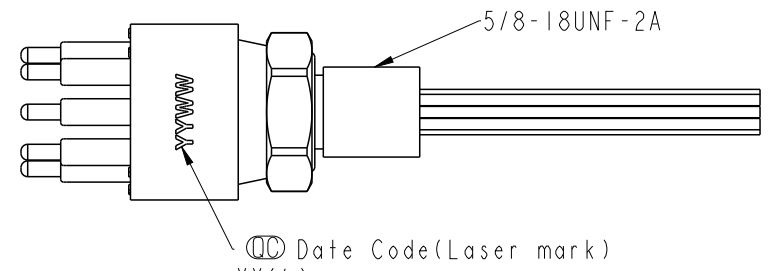
| | | |
|-------------------------------|--------------------|--------------------|
| ITEM NO. | DRAWN BY Eagle | DATE 2022/09/30 |
| DWG NO. DT-HCN-XXRMM-RHA30 | CHECKED BY Aric | DATE 2022/09/30 |
| CUSTOMER ALTW | APPROVED BY Max | DATE 2022/09/30 |

THIS DOCUMENT IS SUBJECT TO CHANGE WITHOUT NOTICE. IT IS CONFIDENTIAL AND A PROPERTY OF AMPHENOL LTW. DISCLOSURE TO THIRD PARTY HAS TO BE AUTHORIZED BY AMPHENOL LTW.

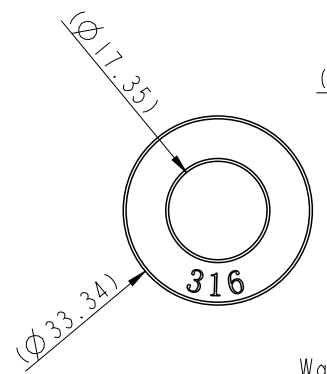
For 6P/8P



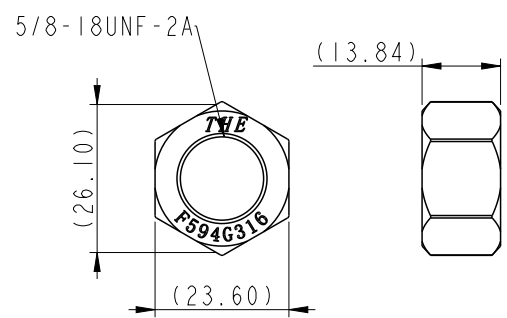
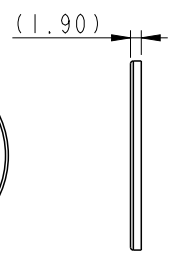
Panel cut out (screw type)



Panel cut out (hole type)



Washer



Nut

| | | |
|----------------|--|--|
| UNIT: mm | | |
| TOLERANCE ±0.5 | | |

| | | | |
|---|----------------|---------------------|--|
| TITLE DT, HAD CIRCULAR MINI REAR FASTENED, M, M | | | |
| SCALE 1:1 | SIZE A4 | SHEET 2 OF 5 | |
| REV. B | WC-REV. A.5 | QC: Inspection item | |

Amphenol LTW
安費諾亮泰企業股份有限公司

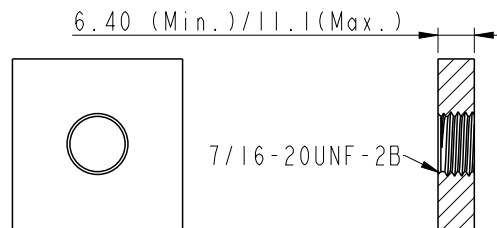
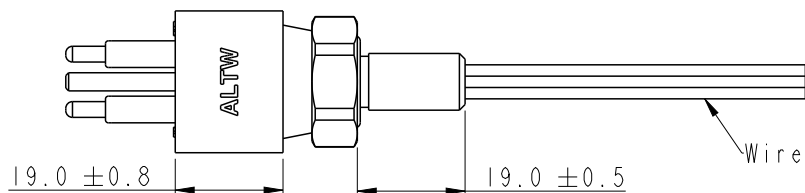
| | |
|------------------|------------------------------|
| ITEM NO | DWG NO DT-HCN-XXRMM-RHA30 |
| CUSTOMER ALTW | |

| | |
|--------------------|--------------------|
| DRAWN BY Eagle | CHECKED BY Aric |
| APPROVED BY Max | |

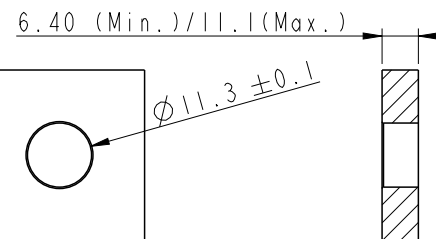
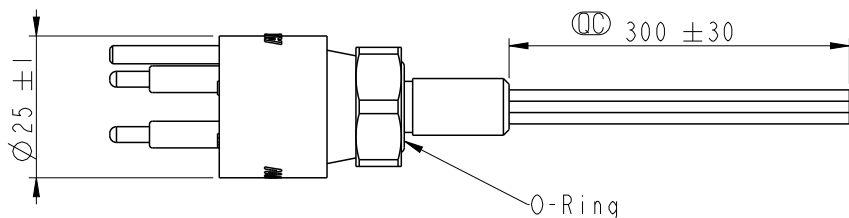
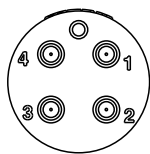
| | |
|--------------------|--------------------|
| DATE 2022/09/30 | DATE 2022/09/30 |
| DATE 2022/09/30 | DATE 2022/09/30 |

THIS DOCUMENT IS SUBJECT TO CHANGE WITHOUT NOTICE. IT IS CONFIDENTIAL AND A PROPERTY OF Amphenol LTW. DISCLOSURE TO THIRD PARTY HAS TO BE AUTHORIZED BY Amphenol LTW.

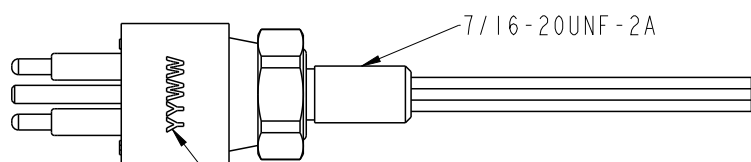
For 3P/4P



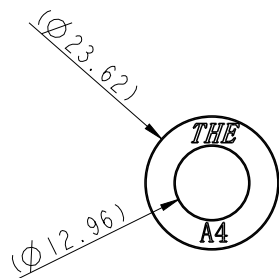
Panel cut out (screw type)



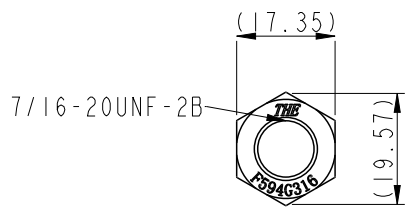
Panel cut out (hole type)



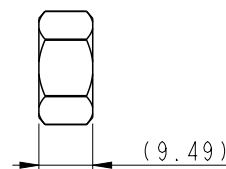
☉ Date Code(Laser mark)
YY(年)
WW(週)



Washer



Nut

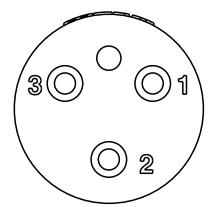


UNIT:mm
TOLERANCE ±0.5

| | | | |
|---|----------------|--------------------|--|
| TITLE DT, HAD CIRCULAR MINI REAR FASTENED, M, M | | | |
| SCALE 1:1 | SIZE A4 | SHEET 3 OF 5 | |
| REV. B | WC-REV. A.5 | ☉: Inspection item | |

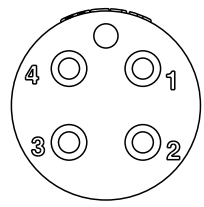
Amphenol LTW
安費諾亮泰企業股份有限公司

| | | |
|------------------------------|--------------------|--------------------|
| ITEM NO | DRAWN BY Eagle | DATE 2022/09/30 |
| DWG NO DT-HCN-XXRMM-RHA30 | CHECKED BY Aric | DATE 2022/09/30 |
| CUSTOMER ALTW | APPROVED BY Max | DATE 2022/09/30 |



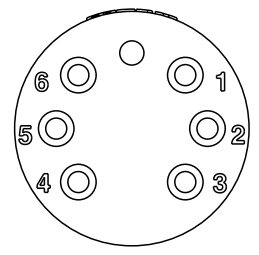
Pin Assignment(Front View)

- Pin Out (3P)
 1 Black(黑) 18AWG
 2 White(白) 18AWG
 3 Red(紅) 18AWG



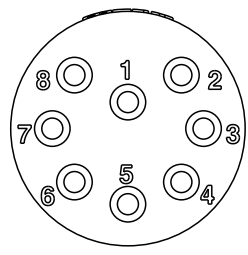
Pin Assignment(Front View)

- Pin Out (4P)
 1 Black(黑) 18AWG
 2 White(白) 18AWG
 3 Red(紅) 18AWG
 4 Green(綠) 18AWG



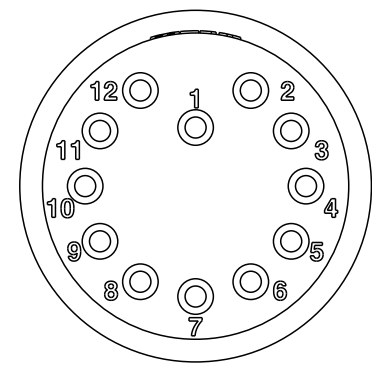
Pin Assignment(Front View)

- Pin Out (6P)
 1 Black(黑) 18AWG
 2 White(白) 18AWG
 3 Red(紅) 18AWG
 4 Green(綠) 18AWG
 5 Orange(橙) 18AWG
 6 Blue(藍) 18AWG



Pin Assignment(Front View)

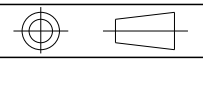
- Pin Out (8P)
 1 Black(黑) 18AWG
 2 White(白) 18AWG
 3 Red(紅) 18AWG
 4 Green(綠) 18AWG
 5 Orange(橙) 18AWG
 6 Blue(藍) 18AWG
 7 White/Black(白/黑) 18AWG
 8 Red/Black(紅/黑) 18AWG



Pin Assignment(Front View)

- Pin Out (12P)
 1 Black(黑) 18AWG
 2 White(白) 18AWG
 3 Red(紅) 18AWG
 4 Green(綠) 18AWG
 5 Orange(橙) 18AWG
 6 Blue(藍) 18AWG
 7 White/Black(白/黑) 18AWG
 8 Red/Black(紅/黑) 18AWG
 9 Green/Black(綠/黑) 18AWG
 10 Orange/Black(橙/黑) 18AWG
 11 Blue/Black(藍/黑) 18AWG
 12 Black/White(黑/白) 18AWG

UNIT:mm
 TOLERANCE



TITLE DT, HAD CIRCULAR MINI REAR FASTENED, M, M

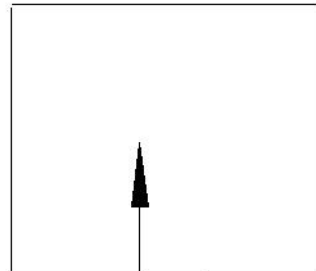
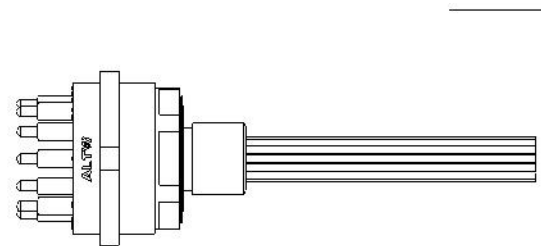
Amphenol LTW
 安費諾亮泰企業股份有限公司

ITEM NO
 DWG NO DT-HCN-XXRMM-RHA30
 CUSTOMER ALTW

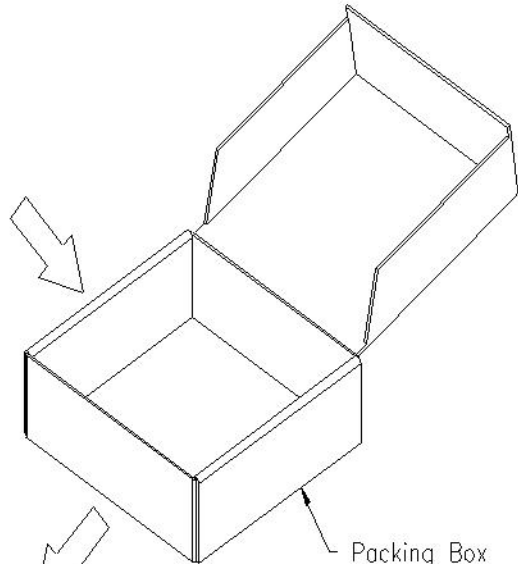
DRAWN BY Eagle
 CHECKED BY Aric
 APPROVED BY Max

DATE 2022/09/30
 DATE 2022/09/30
 DATE 2022/09/30

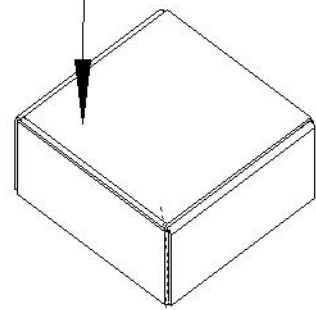
SCALE 1:2
 SIZE A4
 SHEET 4 OF 5
 REV. B
 WC-REV.
 Inspection item



Tray



Packing Box



年 月 ALTW 合格品 RoHS2.0

料號: _____ 廠商: 昆山安費諾正日電子



數量: _____ PC 日期: _____

Lot No: _____ 版本: _____



採購單號: _____



廠商料號: _____

Packing Information

| Minimum Packing Quantity (MPQ) | | |
|--------------------------------|----------|----------|
| PIN | PCS/Tray | Tray/Box |
| 3P | 8 | 2 |
| 4P | 8 | 2 |
| 6P | 8 | 2 |
| 8P | 8 | 2 |
| 12P | 8 | 1 |

Connector will be packed in PE bag if order is less than MPQ

UNIT: mm

TOLERANCE
±0.5

TITLE
DT, HAD CIRCULAR MINI
REAR FASTENED, M, M

| | | | |
|--------------|----------------|--------------------|---------|
| SCALE 1:1 | SIZE A4 | SHEET 5 | OF 5 |
| REV. B | WC-REV. A.5 | ☉: Inspection item | |

Amphenol LTW
安費諾亮泰企業股份有限公司

| | | |
|------------------------------|--------------------|--------------------|
| ITEM NO | DRAWN BY Eagle | DATE 2022/09/30 |
| DWG NO DT-HCN-XXRMM-RHA30 | CHECKED BY Aric | DATE 2022/09/30 |
| CUSTOMER ALTW | APPROVED BY Max | DATE 2022/09/30 |