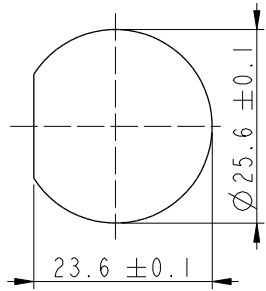
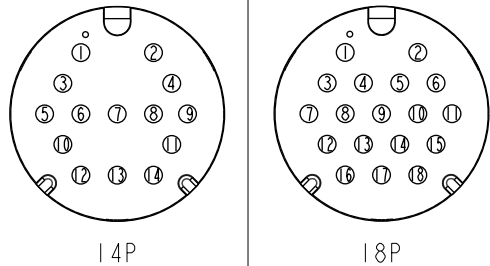
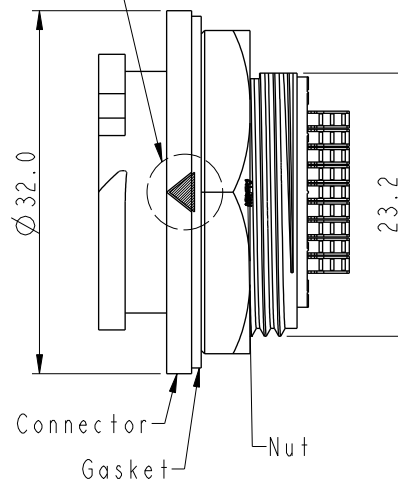
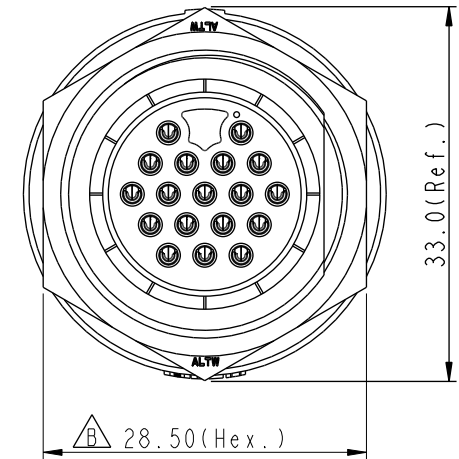
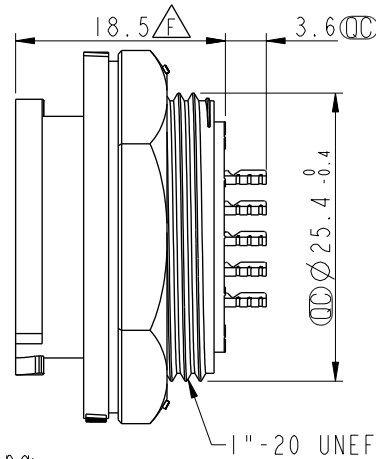
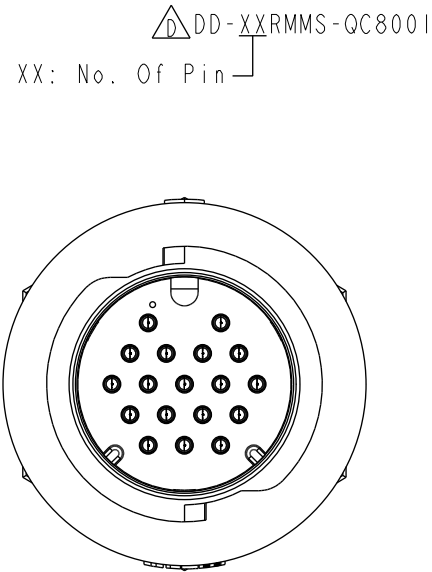


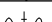
REV.	ECN NO.	DATE	SIGN	DESCRIPTION
D	C220628	2022/05/12	Vicky	 X4
E	C230186	2023/02/13	Vicky	 X1
F	C240285	2024/03/25	Victor Hung	 X1





Recommended
Panel Cut-Out



Pin Assignments Front View

 Note:

- * RoHS Compliant
- *  Important dimension
- *  Waterproof rate: IP68, unmated 1m/24h
- * Connector
 - Housing: Thermoplastic, Black
 - Pin: Copper Alloy, Gold plated
- * Nut: Thermoplastic, Black
- * Gasket: Rubber, Gray
- * For panel thickness max: 3.6mm
- * Gasket and nut are packed separately in pe bag

UNIT : mm			TITLE XLOK, D-5A, REAR FASTENED M, M, SOLDER, PUSH LOCK				Amphenol LTW		ITEM NO DD-XXRMS-QC8001		DRAWN BY Victor Hung		DATE 2024/03/26	
TOLERANCE .X ±0.25 .XX ±0.1 .XXX ±0.05 ANGLES ±1°			SCALE 3:2	SIZE A4	SHEET 1 OF 1		安費諾亮泰企業股份有限公司		 DD-XXRMS-QC8001		CHECKED BY Jc Chen		DATE 2024/03/27	
			REV. F	WC-REV. .0	QC: Inspection item				CUSTOMER ALTW		APPROVED BY Jerry Yen		DATE 2024/03/29	