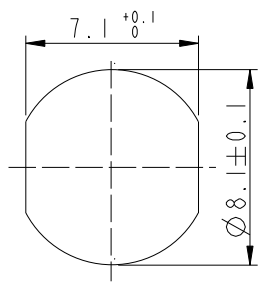
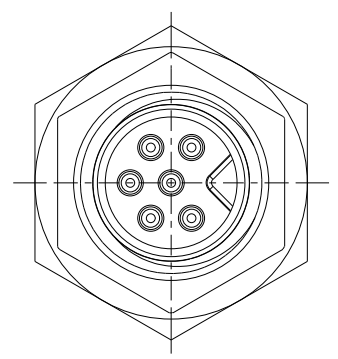
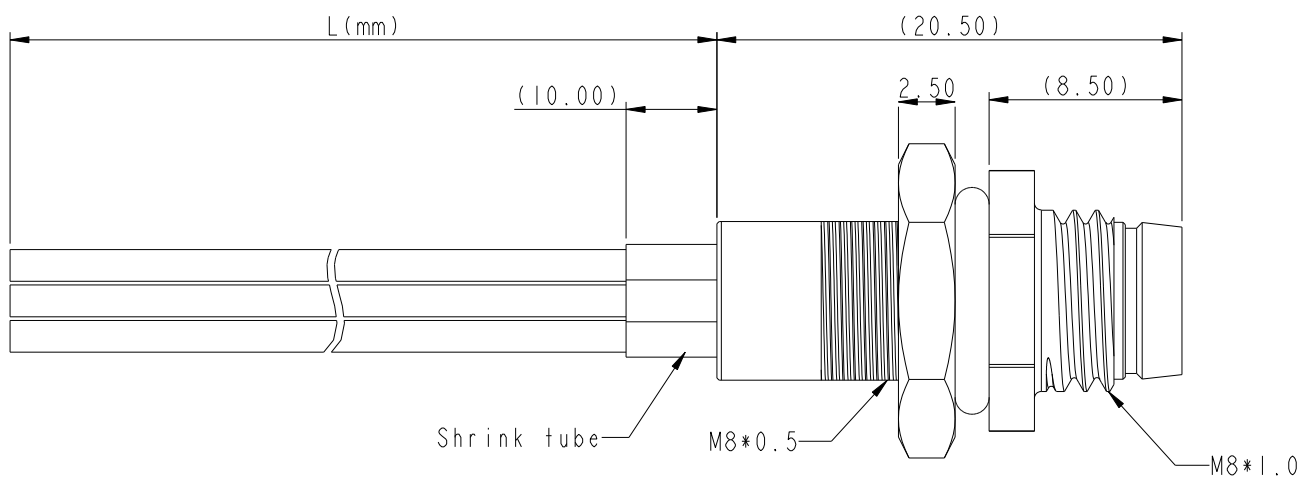


THIS DOCUMENT IS SUBJECT TO CHANGE WITHOUT NOTICE. IT IS CONFIDENTIAL AND A PROPERTY OF Amphenol LTW. DISCLOSURE TO THIRD PARTY HAS TO BE AUTHORIZED BY Amphenol LTW.

REV.	ECN NO.	DATE	SIGN	DESCRIPTION
A		2023/11/27	Henry	New Initial



Recommended Panel Cut-Out



8A-XXPMS-SH7AXX

XX: No. Of Pin

10: 100mm
 15: 150mm
 20: 200mm
 ↓
 95: 950mm
 Cable Pitch Unit=50mm

A0: 1000mm
 ↓
 A5: 1500mm
 Cable Pitch Unit=100mm
 Wire Length (L): 150~1500 mm

Note:

- * RoHS Compliant
- * \varnothing Important dimension
- * Waterproof rate: IP67, unmated
- * Connector
- Housing: Thermoplastic, Black
- Pin: Copper alloy, Gold plated
- * Shield: Metal
- * Nut: Metal
- * O-Ring: Rubber, Black
- * Wire harness: UL1007
- * For panel thickness max: 3.5mm
- * Nut is packed separately in pe bag
- * Wire harness tolerance : 100mm ±10mm
- 100mm < L ≤ 300mm: ±15mm
- 300mm < L ≤ 1000mm: ±20mm
- 1000mm < L ≤ 1500mm: ±50mm

UNIT: mm

TOLERANCE

±0.50mm

TITLE			
O SEN, M8 W/KEY RECEPTACLE, M, M, SOLDER			
SCALE	SIZE	SHEET OF	
3:1	A4	1 OF 2	
REV.	WC-REV.	QC: Inspection item	
A	A.5		

Amphenol LTW

安費諾亮泰企業股份有限公司

ITEM NO.	8A-XXPMS-SH7AXX	DRAWN BY	Henry Xu	DATE	2023/11/27
DWG NO.	8A-XXPMS-SH7AXX	CHECKED BY	Fisher Wang	DATE	2023/11/27
CUSTOMER	ALTW	APPROVED BY	Fred Lee	DATE	2023/11/27

1 2 3 4 5 6 7 8

F

E

D

C

B

A

Pin Out	Pin #	Wire	Pin #	Wire	Pin #	Wire	Pin #	Wire	Pin #	Wire
	2	Red	4	Black	4	Black	5	Yellow	6	Green
	1	Black	3	Blue	3	Blue	4	Orange	5	Yellow
			1	Brown	2	White	3	Red	4	Orange
					1	Brown	2	Brown	3	Red
							1	Black	2	Brown
									1	Black

Pin Assignments Front View

UNIT:mm		TITLE	O SEN, M8 W/KEY RECEPTACLE, M, M, SOLDER		<h1>Amphenol LTW</h1> <p>安費諾亮泰企業股份有限公司</p>	
TOLERANCE	±0.50mm	SCALE	1:1	SIZE		A4
		REV.	A	WC-REV.		A.5
				SHEET		2 OF 2

ITEM NO	8A-XXPMMS-SH7AXX	DRAWN BY	Henry Xu	DATE	2023/11/27
DWG NO	8A-XXPMMS-SH7AXX	CHECKED BY	Fisher Wang	DATE	2023/11/27
CUSTOMER	ALTW	APPROVED BY	fred Lee	DATE	2023/11/27

1 2 3 4 5 6 7 8 W10814-03-001A2