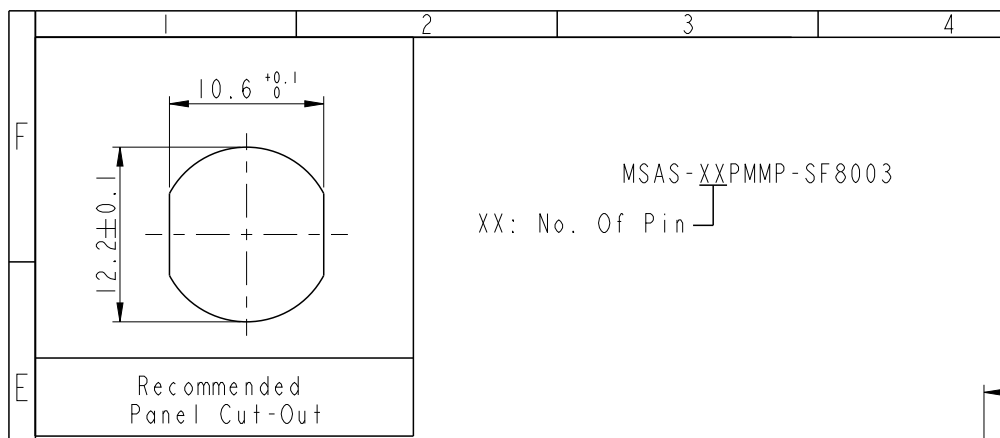
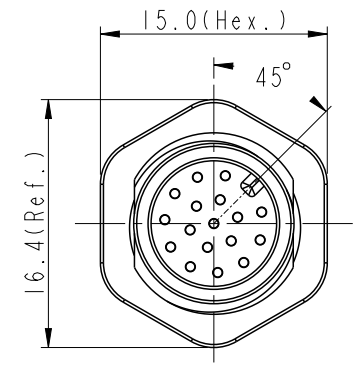
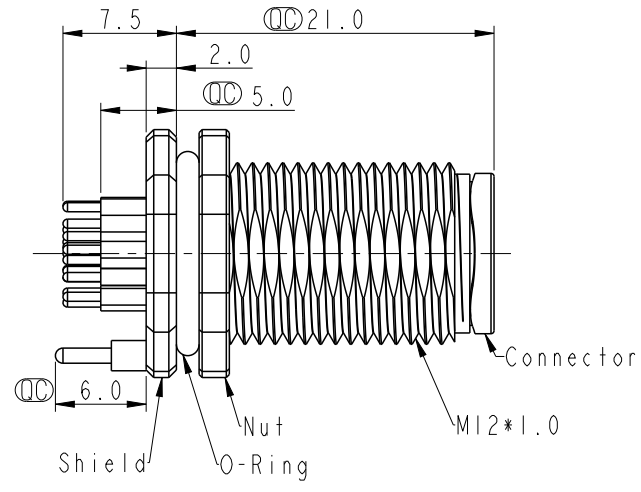
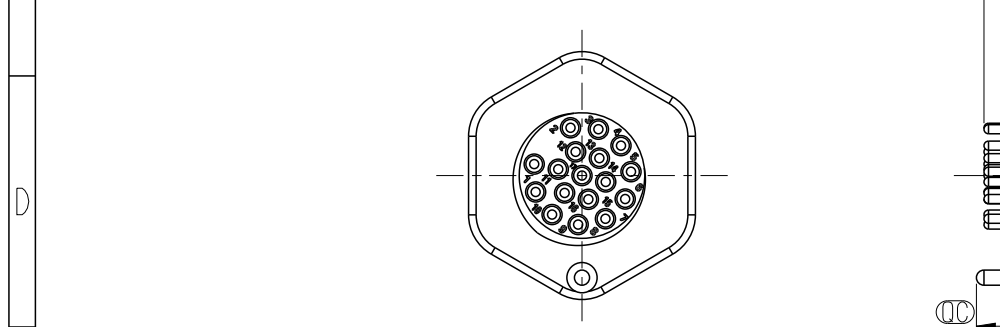


THIS DOCUMENT IS SUBJECT TO CHANGE WITHOUT NOTICE. IT IS CONFIDENTIAL AND A PROPERTY OF AMPHENOL LTW. DISCLOSURE TO THIRD PARTY HAS TO BE AUTHORIZED BY AMPHENOL LTW.

| REV. | ECN NO. | DATE       | SIGN | DESCRIPTION     |
|------|---------|------------|------|-----------------|
| A    |         | 2024/02/27 | Wen  | Rev.01 to Rev.A |
|      |         |            |      |                 |



MSAS-XXPMMP-SF8003  
 XX: No. Of Pin



Pin Assignment Front View

Note:

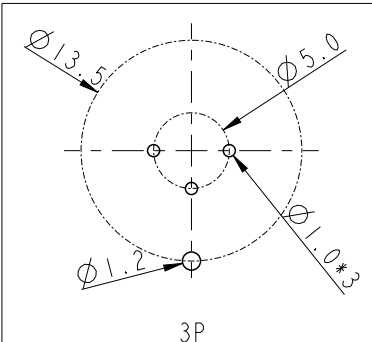
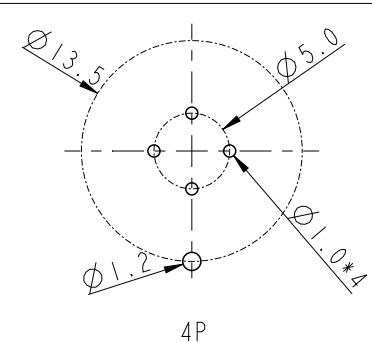
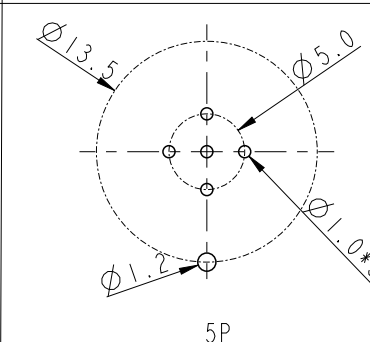
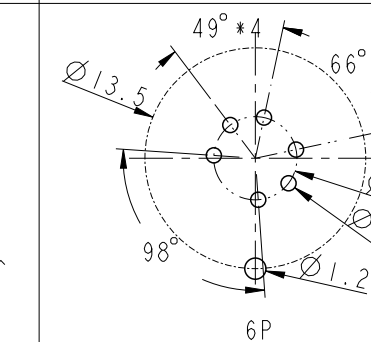
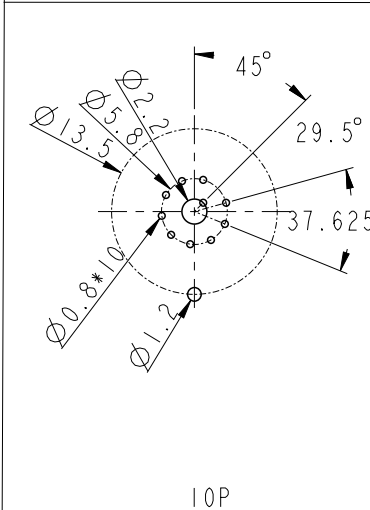
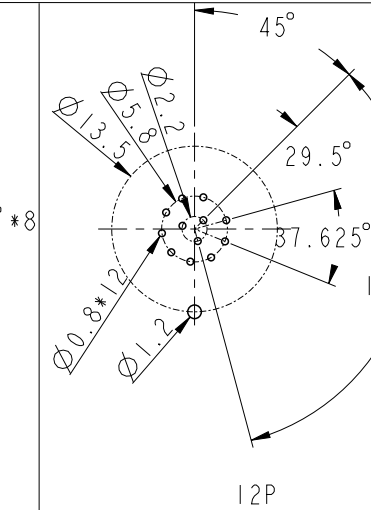
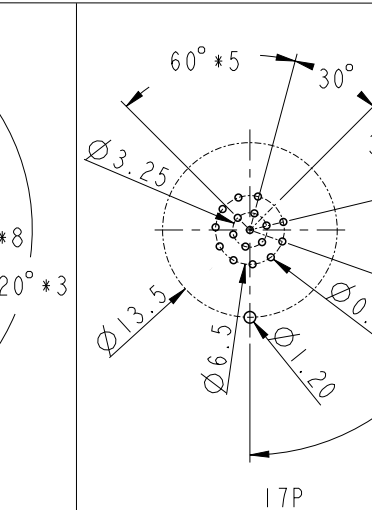
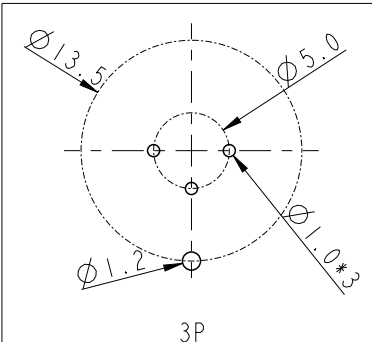
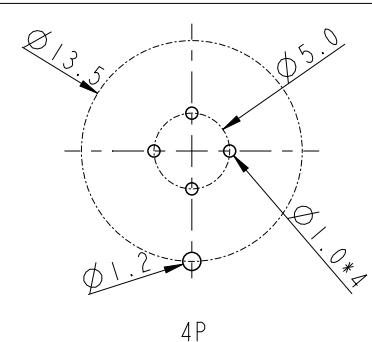
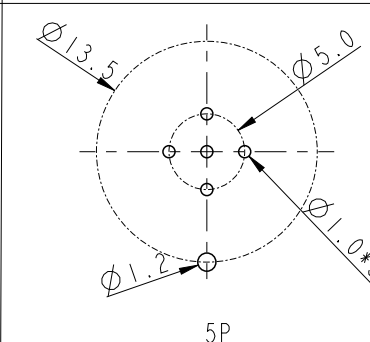
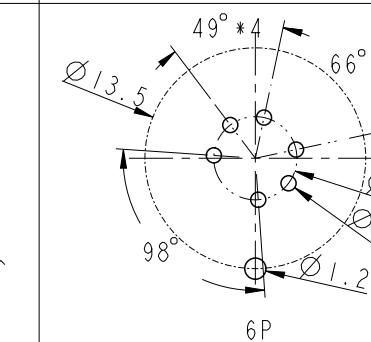
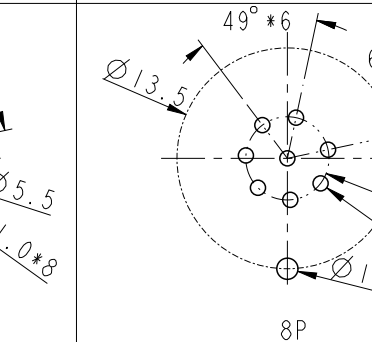

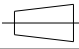
- \* RoHS Compliant
- \* ⌀ Important dimension
- \* Waterproof rate: IP68, unmated 1m/24h  
IP69K, mated
- \* Connector  
 Housing: Thermoplastic, Black  
 Pin: Copper alloy, Gold plated
- \* Shield: Metal
- \* Nut: Metal
- \* O-Ring: Rubber, Gray
- \* For panel thickness max: 4.5mm
- \* Nut is packed separately in pe bag

|   |                |                    |   |
|---|----------------|--------------------|---|
| UNIT: mm  |                |                    | TITLE<br>N SEN, M12 A -SHLD, SCREW<br>RECEPTACLE, M, M, PCB S |
| TOLERANCE<br>.X ±0.25<br>.XX ±0.1<br>.XXX ±0.05<br>ANGLES ±1° | SCALE<br>2:1   | SIZE<br>A4         | SHEET<br>1 OF 2   |
| REV.<br>A   | WC-REV.<br>A.5 | ⌀: Inspection item |   |

**Amphenol LTW**  
 安費諾亮泰企業股份有限公司

|                               |                     |                    |
|-------------------------------|---------------------|--------------------|
| ITEM NO.                      | DRAWN BY<br>Wen     | DATE<br>2024/02/27 |
| DWG NO.<br>MSAS-XXPMMP-SF8003 | CHECKED BY<br>Neo   | DATE<br>2024/02/27 |
| CUSTOMER<br>ALTW              | APPROVED BY<br>Fred | DATE<br>2024/02/27 |

THIS DOCUMENT IS SUBJECT TO CHANGE WITHOUT NOTICE. IT IS CONFIDENTIAL AND A PROPERTY OF Amphenol LTW. DISCLOSURE TO THIRD PARTY HAS TO BE AUTHORIZED BY Amphenol LTW.

|   |  |                    |   |                 |   |                     |   |                   |                    |
|---|--|--------------------|---|-----------------|---|---------------------|---|-------------------|--------------------|
| F   | 2  | 3                  | 4   | 5               | 6   | 7                   | 8   |                   |                    |
| E   | PCB Layout   |                    |   |                 |   |                     |   |                   |                    |
| D   |  <p style="text-align: center;">3P</p>  |                    |  <p style="text-align: center;">4P</p>   |                 |  <p style="text-align: center;">5P</p>  |                     |  <p style="text-align: center;">6P</p> |                   |                    |
| C   |  <p style="text-align: center;">10P</p>   |                    |  <p style="text-align: center;">12P</p> |                 |  <p style="text-align: center;">17P</p> |                     |   |                   |                    |
| B   |      |                    |   |                 |   |                     |   |                   |                    |
| A   | UNIT: mm     |                    | TITLE<br>N SEN, M12 A -SHLD, SCREW<br>RECEPTACLE, M, M, PCB S   |                 | <h1 style="margin: 0;">Amphenol LTW</h1> <p style="margin: 0;">安費諾亮泰企業股份有限公司</p>  |                     | ITEM NO<br>MSAS-XXPMMP-SF8003   | DRAWN BY<br>Wen   | DATE<br>2024/02/27 |
| TOLERANCE<br>.X ±0.25<br>.XX ±0.1<br>.XXX ±0.05<br>ANGLES ±1° |  | SCALE<br>2:1       | SIZE<br>A4  | SHEET<br>2 OF 2 | REV.<br>A   | WC-REV.<br>A.4      | CUSTOMER<br>ALTW  | CHECKED BY<br>Neo | DATE<br>2024/02/27 |
|   |  | ◎: Inspection item |   |                 |   | APPROVED BY<br>Fred | DATE<br>2024/02/27  |                   |                    |
|   | 2  | 3                  | 4   | 5               | 6   | 7                   | 8   | W10814-03-001A2   |                    |