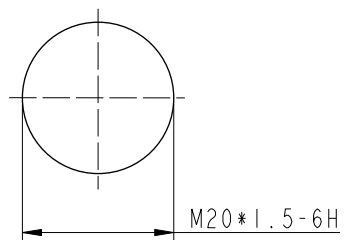
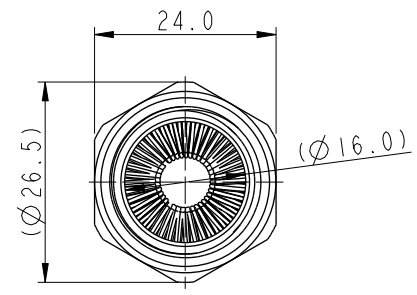
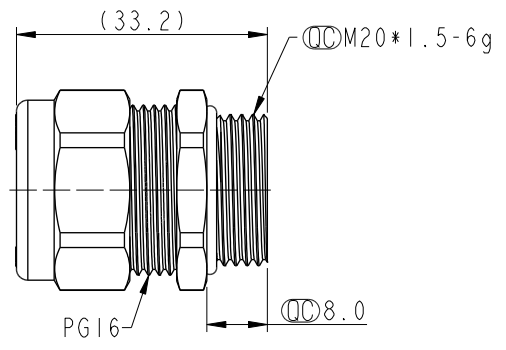
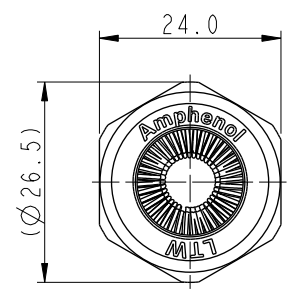
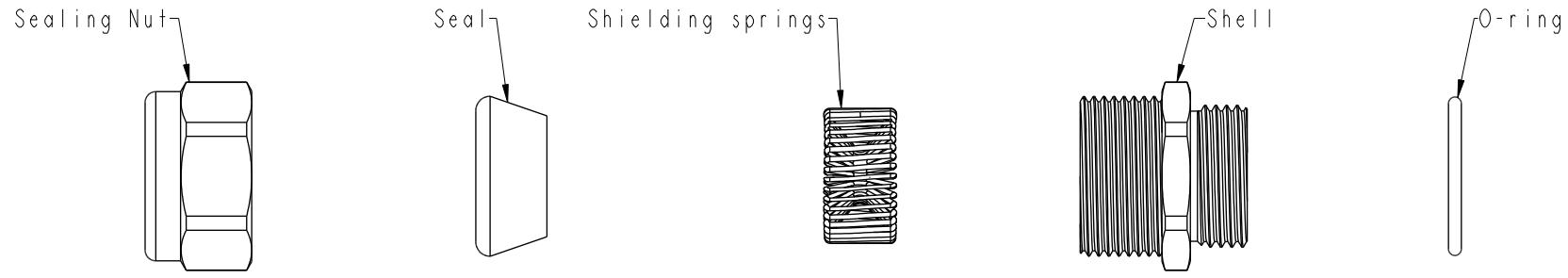


THIS DOCUMENT IS SUBJECT TO CHANGE WITHOUT NOTICE. IT IS CONFIDENTIAL AND A PROPERTY OF Amphenol LTW. DISCLOSURE TO THIRD PARTY HAS TO BE AUTHORIZED BY Amphenol LTW.

REV.	ECN NO.	DATE	SIGN	DESCRIPTION
A	-	2024/04/01	Jiahe Lin	Rev.01 To Rev.A

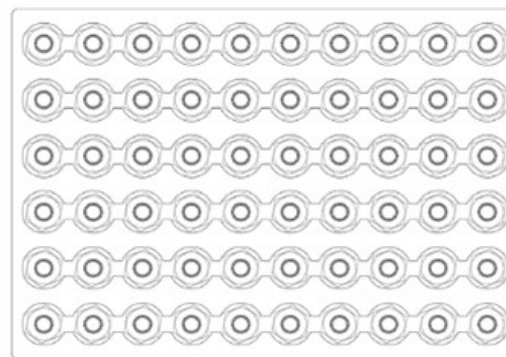
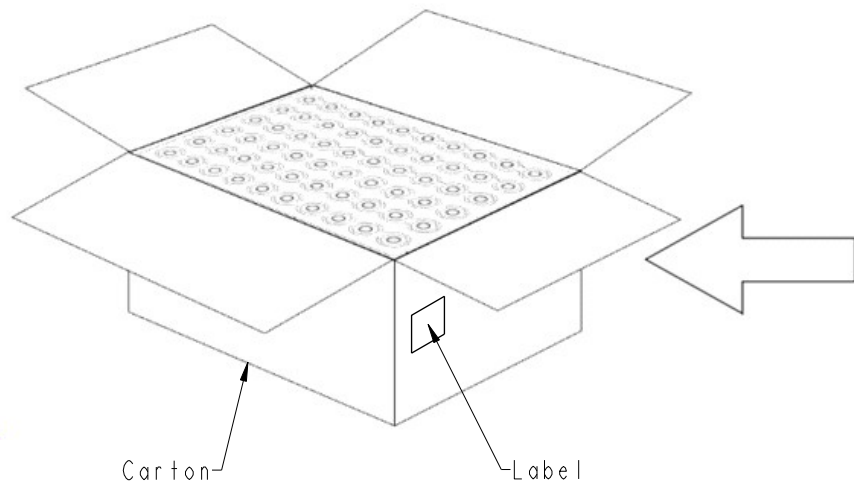
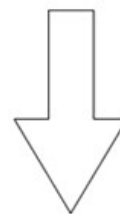
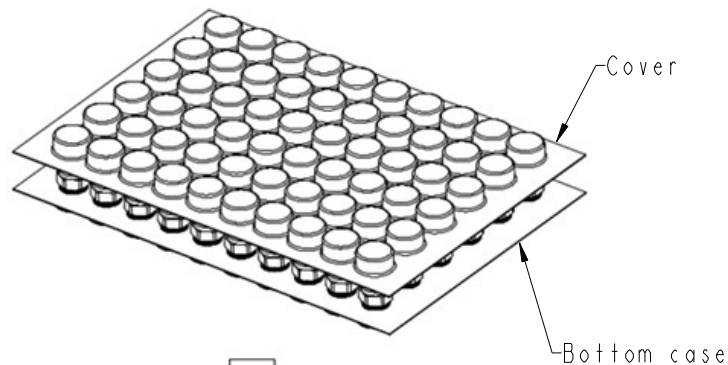
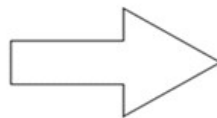
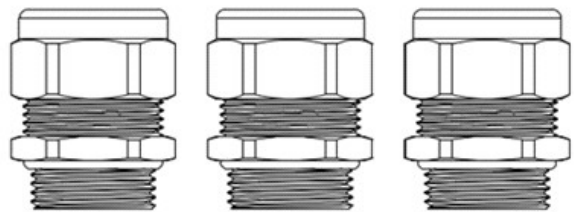


Recommended Panel Cut-Out

- Note:
- * RoHS Compliant
 - * (ø) Important dimension
 - * Waterproof rate: IP68, 1m/24h
 - * Sealing Nut: Metal
 - * Seal: Rubber, Black
 - * Shielding springs: Metal
 - * Shell: Metal
 - * O-ring: Rubber, Black
 - * Cable OD Range: 10mm~14mm
 - * For panel thickness min: 4.5mm
 - * Operating Temperature: -40℃~160℃
 - * Salt spray test requires 48h

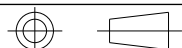
UNIT: mm 	TOLERANCE .X ±0.25 .XX ±0.1 .XXX ±0.05 ANGLES ±1°		TITLE CABLE GLAND, M20, ME 10, 14, SR, EMC		Amphenol LTW 安費諾亮泰企業股份有限公司	ITEM NO ESG-20M002	DRAWN BY Jiahe Lin	DATE 2024/04/01
	SCALE 1:1		SIZE A4	SHEET 1 OF 2		DWG NO ESG-20M002	CHECKED BY Fisher Wang	DATE 2024/04/01
	REV. A	WC-REV.	(ø) Inspection item			CUSTOMER ALTW	APPROVED BY Kevin Hu	DATE 2024/04/01

THIS DOCUMENT IS SUBJECT TO CHANGE WITHOUT NOTICE. IT IS CONFIDENTIAL AND A PROPERTY OF Amphenol LTW. DISCLOSURE TO THIRD PARTY HAS TO BE AUTHORIZED BY Amphenol LTW.



* Quantity: 60 pcs/tray, 300 Pcs/carton
 * Carton size: 37x26x19cm

UNIT:mm



TOLERANCE
 .X ±0.25
 .XX ±0.1
 .XXX ±0.05
 ANGLES ±1°

TITLE CABLE GLAND, M20, ME 10, 14, SR, EMC			
SCALE 1:1	SIZE A4	SHEET 2 OF 2	
REV. A	WC-REV.	QC: Inspection item	

Amphenol LTW
 安費諾亮泰企業股份有限公司

ITEM NO ESG-20M002	DRAWN BY Jiahe Lin	DATE 2024/04/01
DWG NO ESG-20M002	CHECKED BY Fisher Wang	DATE 2024/04/01
CUSTOMER ALTW	APPROVED BY Kevin Hu	DATE 2024/04/01