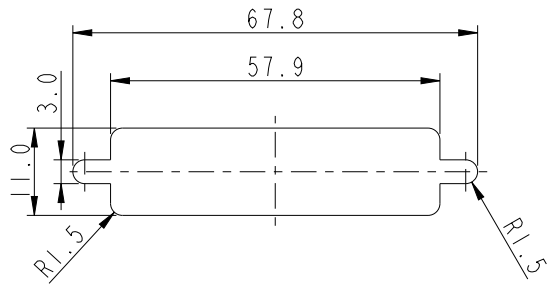


REV.	ECN NO.	DATE	SIGN	DESCRIPTION
B	LEN1390041	2007/10/03	Lu Di	Update Dimensions
C	LEN13B0261	2013/11/13	Sam	Modify Dimension
D	C240545	2024/05/24	Wenxinag	DX1



Screw L=5.0 For Panel Thickness
Under 1.2mm
適用板厚為 1.2mm 以下

Screw L=6.0 For Panel Thickness
Between 1.2~2.0mm
適用板厚為 1.2~2.0mm



Note:

- * \varnothing Important Dimension.
- * Waterproof Rate : IP67
- * Do Mating Test After Glued
點膠後，須作對插測試
- * HD-SUB Conn. : Black Core,PBT
- * Plastic Jacket : Black,Nylon+GF
- * Male Pin : Copper Alloy , Gold Plated
- * Ring : Light Blue,Silicone
- * Screw : Copper Alloy,Nickel Plated,
#4-40 UNC
- * The 180° Board Lock Needs
To Connect The Iron Shell
180° 型支架需接鐵殼

UNIT:mm		TITLE HD-Sub Conn. 62 Pins PCB Type For Panel,PCB 180° Board Lock		ITEM NO HDB-62PMMP-SA7001		DRAWN BY Wenxiang Li		DATE 2024/05/24	
TOLERANCE .X ±0.25 .XX ±0.1 .XXX ±0.05 ANGLES ±1°		SCALE 1:1		DWG NO HDB-62PMMP-SA7001		CHECKED BY Jerry		DATE 2024/05/24	
REV. D		WC-REV. B.2		CUSTOMER ALTW		APPROVED BY Fred		DATE 2024/05/24	
		SHEET 1 OF 1							
		QC: Inspection item							

Amphenol LTW
安費諾亮泰企業股份有限公司

W10814-03-2001A2