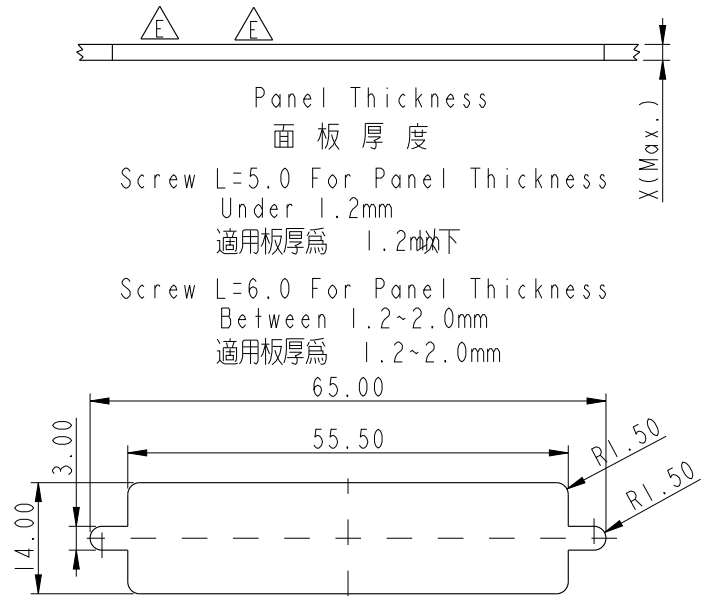
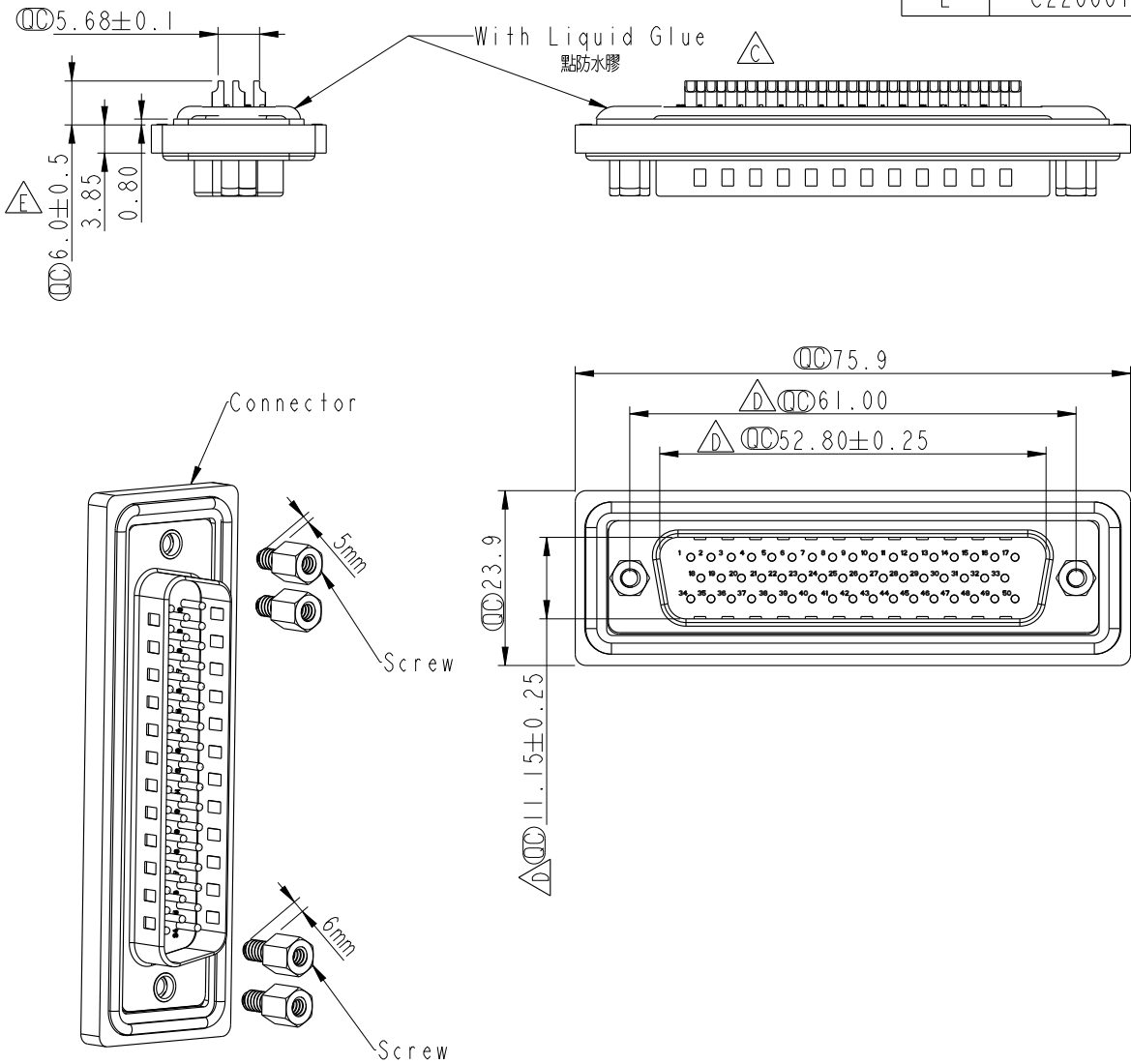


REV.	ECN NO.	DATE	SIGN	DESCRIPTION
C	LEN-980061	2009/08/05	Vicky	Remove Pin Dim.
D	LEN1350291	2013/05/31	Yulong	Update the Dimension
E	C220601	2022/04/19	San	$\triangle E$ X3



Recommended Panel Cut-Out  
建議挖孔尺寸

- $\triangle E$  Note:
- \*  $\text{CC}$  Important Dimension.
  - \* Waterproof Rate: IP67
  - \* Do Mating Test After Glued  
點膠後，須作對插測試
  - \* Housing: Thermoplastic, Black.
  - \* Connector: Thermoplastic, Black.
  - \* Male Pin: Copper Alloy, Gold Plated.
  - \* Ring: Silicone, Light Blue.
  - \* Screw: Copper Alloy, Nickel Plated, #4-40 UNC.
  - \* Applicable Wire Range: 22AWG-26AWG.  
適用電線範圍：22AWG-26AWG

UNIT: mm		TITLE D-SUB, DB SHLD, 50P, FRONT FASTENED M, M, SOLDER, SCREW $\triangle E$
TOLERANCE .X $\pm 0.25$ .XX $\pm 0.1$ .XXX $\pm 0.05$ ANGLES $\pm 1^\circ$	SCALE 1:1	SIZE A4
	REV. E	SHEET 1 OF 1
	WC-REV. A.4	$\text{CC}$ : Inspection item

**Amphenol LTW**  
安費諾亮泰企業股份有限公司

ITEM NO SDB-50PMMS-SL7001	DRAWN BY DEL_Yulong_wang	DATE 2013-05-31
DWG NO SDB-50PMMS-SL7001	CHECKED BY Victor	DATE 2013-05-31
CUSTOMER ALTW	APPROVED BY Maslow	DATE 2013-05-31

THIS DOCUMENT IS SUBJECT TO CHANGE WITHOUT NOTICE. IT IS CONFIDENTIAL AND A PROPERTY OF AMPHENOL LTW. DISCLOSURE TO THIRD PARTY HAS TO BE AUTHORIZED BY AMPHENOL LTW.