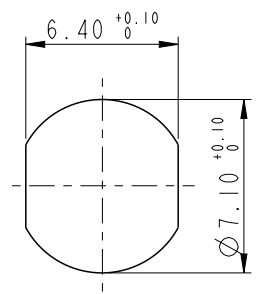
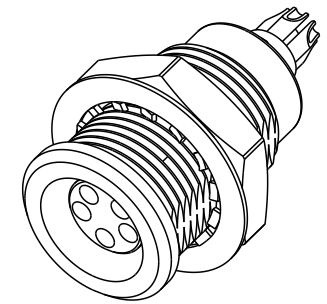
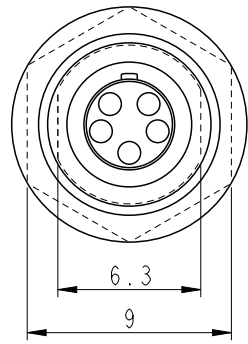
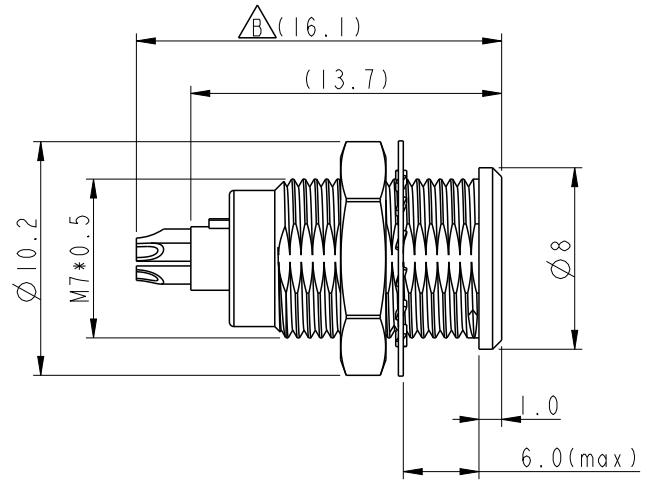
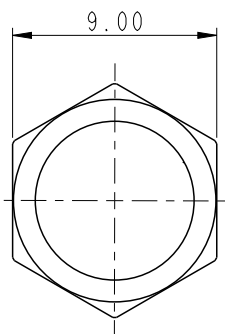


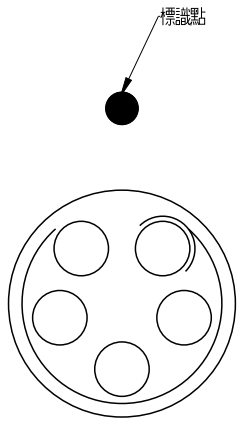
REV.	ECN NO.	DATE	SIGN	DESCRIPTION
A		2020/06/30	Brady	New Item
B	C211223	2021/06/28	Brady	$\triangle B$ x1



Recommended Panel Cut-Out



NUT



焊接面孔位圖

Notes:
 * $\text{\textcircled{C}}$ Important Dimensions To Check.
 * Pin: Copper Alloy, Gold Plated.

UNIT: mm		
TOLERANCE		
.X	± 0.25	
.XX	± 0.1	
.XXX	± 0.05	
ANGLES	$\pm 1^\circ$	

TITLE FLOS, LB-SER, SZ 00, 05P, PANEL F H/NUT F, SOLDER, IKEY 0		
SCALE 1:1	SIZE A4	SHEET 1 OF 1
REV. B	WC-REV. A.5	$\text{\textcircled{C}}$: Inspection item

Amphenol LTW
 安費諾亮泰企業股份有限公司

ITEM NO. FLBA-05EGFS-GCP-001	DRAWN BY Brady Chung	DATE 2021/06/30
DWG NO. FLBA-05EGFS-GCP-001	CHECKED BY Eric Liao	DATE 2021/06/30
CUSTOMER ALTW	APPROVED BY Neo Tsai	DATE 2021/06/30

THIS DOCUMENT IS SUBJECT TO CHANGE WITHOUT NOTICE. IT IS CONFIDENTIAL AND A PROPERTY OF Amphenol LTW. DISCLOSURE TO THIRD PARTY HAS TO BE AUTHORIZED BY Amphenol LTW.